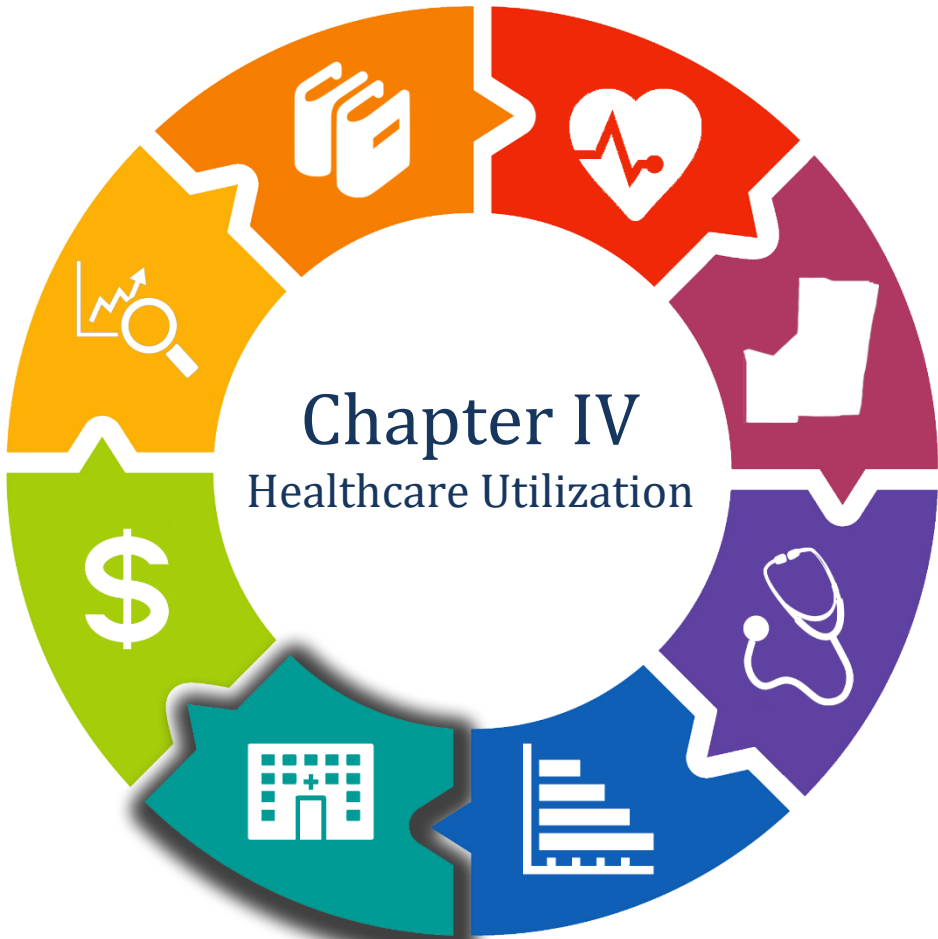


Broward County Health Plan



CHAPTER IV: THE HEALTH DATA WAREHOUSE
Table of Contents

INTRODUCTION 4

TOTAL HOSPITAL UTILIZATION 4

 Table 1. Total Hospital Utilization 2022.....4

 Figure 1. Hospital Admissions, 2022.....5

 Table 2. Total Hospital Utilization – Observations, 20226

HOSPITAL LONG TERM CARE UTILIZATION 6

 Table 3. Long Term Care Utilization, 20226

HOSPITAL MEDICARE ELIGIBLE UTILIZATION..... 7

 Table 4. Total Hospital Medicare Eligible (65+), 2022.....7

 Table 5. Total Long-Term Care Medicare Eligible (65+), 20227

HOSPITAL ACUTE CARE UTILIZATION 8

 Table 6. Acute Care Totals, 20228

 Table 7. Long Term Care Acute Care Totals, 20228

HOSPITAL OTHER ACUTE CARE UTILIZATION 9

 Table 8. Other Acute Care Services Utilization, 20229

HOSPITAL MEDICAL SURGICAL UTILIZATION..... 9

 Table 9. Medical Surgical Services Utilization, 20229

 Table 10. Long Term Care Medical Surgical Utilization, 2022.....9

HOSPITAL CRITICAL CARE UTILIZATION 10

 Table 11. Critical Care Utilization, 2022.....10

 Table 12. Long Term Critical Care Utilization, 202210

HOSPITAL PEDIARTIC UTILIZATION..... 10

 Table 13. Pediatric Services Utilization, 202210

HOSPITAL OBSTETRICAL UTILIZATION 10

 Table 14. Obstetrical Services Utilization, 202210

HOSPITAL NEWBORN UTILIZATION 11

 Table 15. Newborn Services Utilization, 2022.....11

HEALTH NEONATAL UTILIZATION 11

 Table 16. Level II Neonatal Services Utilization, 202211

 Table 17. Level III Neonatal Services, Utilization, 202211

HOSPITAL REHABILITATIVE UTILIZATION 11

Table 18. Rehabilitative Services Utilization, 2022.....	11
HOSPITAL PSYCHIATRIC UTILIZATION	12
Table 19. Adult Psychiatric Utilization, 2022	12
Table 20. Child/Adolescent Psychiatric Utilization, 2022.....	12
HOSPITAL SUBSTANCE ABUSE UTILIZATION.....	12
Table 21. Adult Substance Abuse Utilization, 2022	12
OPEN HEART, CATHETERIZATION & ANGIOPLASTIES	13
Table 22. Adult Open Heart, Catherizations and Angioplasties, 2022	13
Table 23. Pediatric Open Heart, Catherizations and Angioplasties, 2022	13
Figure 2. Broward County Catherizations, 2022	13
Figure 3. Broward County Angioplasties, 2022	14
EMERGENCY DEPARTMENT UTILIZATION	15
Table 24. Emergency Department Utilization, 2022	15
Figure 4. Emergency Department Utilization Visits vs. Admissions, 2022	15
HOSPITAL PROCEDURES.....	16
Table 25. Procedures, Surgical Operations, 2022	166
Table 26. Procedures, Physical Therapy, 2022	166
Table 27. Procedures: Occupational Therapy, 2022	177
Table 28. Procedures, Speech Therapy.....	177
Table 29. Procedures: Laboratory, 2022	188
Table 30. Procedures: CT Scans.....	19
Table 31. Procedures: MRI.....	19
Table 32. Procedures: Ultrasound.....	20
Table 33. Procedures: Nuclear Medicine	20
Table 34. All Other Radiological.....	21
Table 35. Shock Wave	22
Table 36. Procedures: Adult Transplants, 2022.....	22
Table 37. Procedures: Pediatric Transplants, 2022.....	22
Table 38. Procedures: Mammography, 2022	22
Table 39. Procedures: Pet Scan, 2022.....	233

INTRODUCTION

This Chapter provides healthcare utilization data, including hospital discharges, hospital utilization, emergency department utilization and ambulatory care data as reported in the Broward Regional Health Planning Council's Health Data Warehouse.

TOTAL HOSPITAL UTILIZATION

Error! Reference source not found. outlines hospital utilization in 2022. The average occupancy was 56.3 percent, the average length of stay was 5.8 days, and the number of licensed beds was 6,159.

Table 1. Total Hospital Utilization 2022

Agency Name	Beds Licensed	Avg Daily Census	Occupancy Rate	Number of Admissions	Patient Days	Avg Length of Stay
Broward Health Coral Springs	250	137.7	55.1%	10,479	50,259	4.8
Broward Health Imperial Point	204	78.3	38.4%	5,981	28,597	4.8
Broward Health Medical Center	723	415.7	57.5%	23,150	151,746	6.6
Broward Health North	409	187.9	46.0%	11,076	68,601	6.2
Cleveland Clinic Hospital	206	200.8	97.5%	14,023	73,279	5.2
Encompass Health Rehabilitation Hospital Of Sunrise	126	88.8	70.5%	2,327	32,428	13.9
Ft. Lauderdale Behavioral Health Center	182	125.4	68.9%	7,447	45,771	6.1
HCA Florida University Hospital	165	72.3	43.8%	5,955	26,376	4.4
HCA Florida Woodmont Hospital	286	168.1	58.8%	10,783	61,363	5.7
Holy Cross Health	557	199.5	35.8%	13,420	72,809	5.4
Larkin Community Hospital Behavioral Health Services	49	35.8	73.0%	1,351	13,056	9.7
Memorial Hospital Miramar	178	106.3	59.7%	9,869	38,782	3.9
Memorial Hospital Pembroke	301	96.7	32.1%	7,089	35,278	5.0
Memorial Hospital West	486	355.6	73.2%	23,019	129,779	5.6
Memorial Regional Hospital	797	641.2	80.5%	32,768	234,047	7.1
Memorial Regional Hospital South	216	90.0	41.7%	3,568	32,851	9.2
North Shore Medical Center - FMC Campus	459	111.3	24.3%	8,144	40,635	5.0
Northwest Medical Center	289	170.1	58.9%	14,058	62,098	4.4
St. Anthony's Rehab Hospital	26	13.5	52.0%	337	4,938	14.7
Westside Regional Medical Center	250	174.8	69.9%	13,973	63,786	4.6
TOTAL	6,159	3,469.8	56.3%	218,817	1,266,479	5.8

Figure 1. Hospital Admissions, 2022

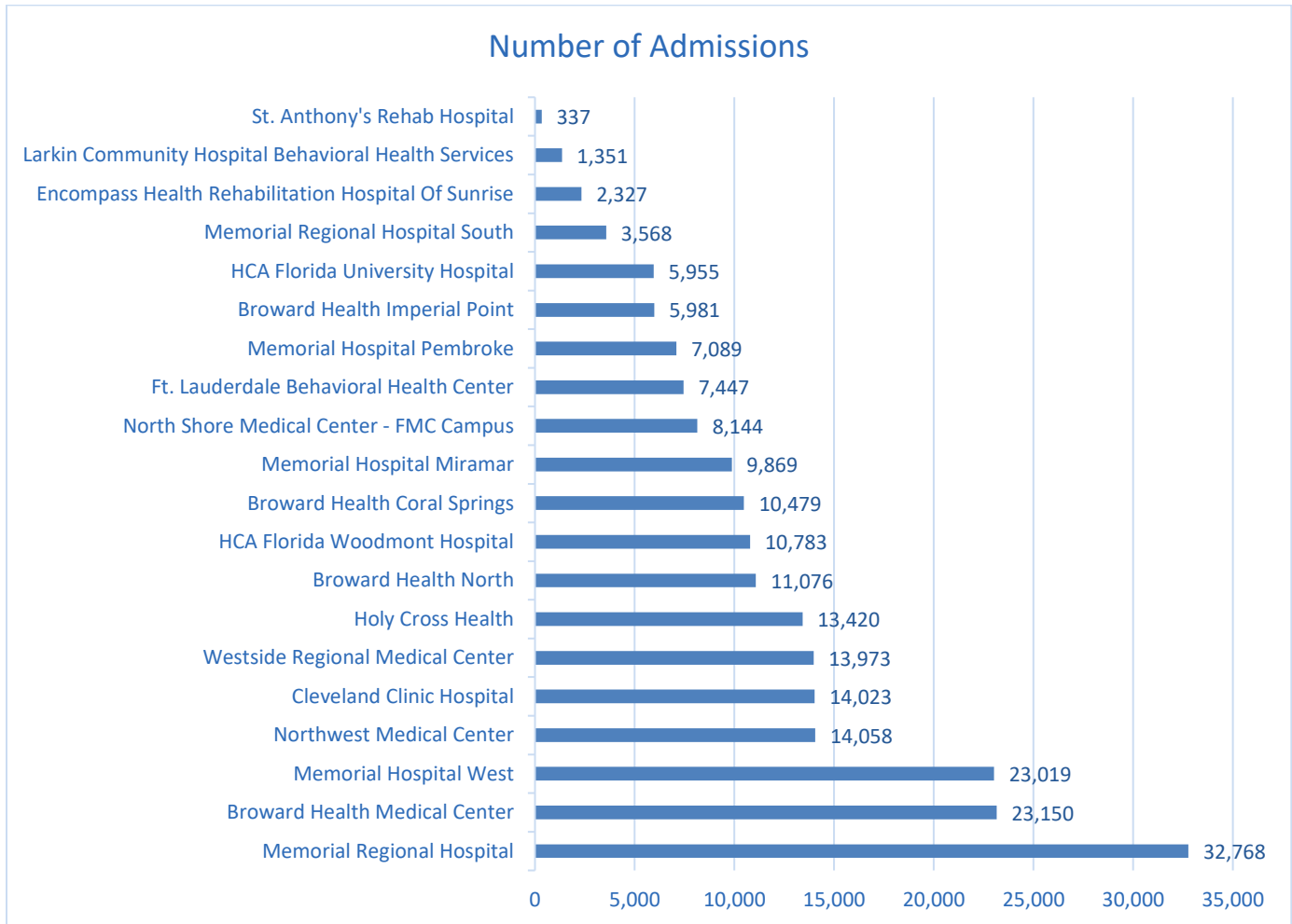


Table 2. Total Hospital Utilization – Observations, 2022

Agency Name	Observation Cases	Observation Hours	Avg Daily Census
Broward Health Coral Springs	8,128	284,290	32.5
Broward Health Imperial Point	4,425	144,888	16.5
Broward Health Medical Center	9,931	372,360	42.5
Broward Health North	8,448	312,979	35.7
Cleveland Clinic Hospital	7,911	204,164	23.3
HCA Florida University Hospital	2,637	59,065	6.7
HCA Florida Woodmont Hospital	4,600	106,072	12.1
Holy Cross Health	4,411	180,217	20.6
Memorial Hospital Miramar	5,334	201,498	23.9
Memorial Hospital Pembroke	5,256	253,928	29.0
Memorial Hospital West	11,157	428,647	48.9
Memorial Regional Hospital	15,245	515,912	58.9
Memorial Regional Hospital South	1,352	44,461	5.1
North Shore Medical Center - FMC Campus	4,195	86,198	9.8
Northwest Medical Center	8,939	290,968	33.2
Westside Regional Medical Center	10,263	160,392	18.3
TOTAL	112,232	3,646,039	416.2

HOSPITAL LONG TERM CARE UTILIZATION

Table 3. Long Term Care Utilization, 2022

Agency Name	Beds Licensed	Avg Daily Census	Occupancy Rate	Number of Admissions	Patient Days	Avg Length of Stay
Kindred Hospital - Ft. Lauderdale	72	49.3	68.5%	889	17,995	20.2
Kindred Hospital - Hollywood	119	46.2	38.8%	470	16,863	35.9
TOTAL	191	95.5	50.0%	1,359	34,858	25.6

HOSPITAL MEDICARE ELIGIBLE UTILIZATION

Table 4. Total Hospital Medicare Eligible (65+), 2022

Agency Name	Admissions 65+	Admissions % Total	Patient Days 65+	Days % Total	65+ Average length of stay
Broward Health Coral Springs	3,622	34.6%	20,366	40.5%	5.6
Broward Health Imperial Point	2,052	34.3%	9,690	33.9%	4.7
Broward Health Medical Center	4,820	20.8%	33,560	22.1%	7
Broward Health North	5,174	46.7%	33,346	48.6%	6.4
Cleveland Clinic Hospital	3,675	26.2%	18,901	25.8%	5.1
Ft. Lauderdale Behavioral Health Center	487	6.5%	3,105	6.8%	6.4
HCA Florida University Hospital	1,415	23.8%	6,007	22.8%	4.2
HCA Florida Woodmont Hospital	4,927	45.7%	29,308	47.8%	5.9
Holy Cross Health	8,559	63.8%	35,001	48.1%	4.1
Larkin Community Hospital Behavioral Health Services	7	0.5%	96	0.7%	13.7
Memorial Hospital Miramar	3,002	30.4%	14,767	38.1%	4.9
Memorial Hospital Pembroke	3,655	51.6%	19,571	55.5%	5.4
Memorial Hospital West	11,370	49.4%	72,663	56.0%	6.4
Memorial Regional Hospital	10,200	31.1%	80,342	34.3%	7.9
Memorial Regional Hospital South	2,081	58.3%	18,421	56.1%	8.9
North Shore Medical Center - FMC Campus	1,522	18.7%	7,316	18.0%	4.8
Northwest Medical Center	6,489	46.2%	31,745	51.1%	4.9
St. Anthony's Rehab Hospital	194	57.6%	2,569	52.0%	13.2
Westside Regional Medical Center	11,753	84.1%	31,927	50.1%	2.7
TOTAL	85,004	38.8%	468,701	37.00%	5.5

Table 5. Total Long-Term Care Medicare Eligible (65+), 2022

Agency Name	Admissions 65+	Admissions % Total	Patient Days 65+	Days % Total	65+ Average length of stay
Kindred Hospital - Ft. Lauderdale	144	16.20%	3,361	18.70%	23.3
Kindred Hospital - Hollywood	328	69.80%	0	0.00%	0
TOTAL	472	34.70%	3,361	9.60%	7.1

HOSPITAL ACUTE CARE UTILIZATION

Table 6. Acute Care Totals, 2022

Agency Name	Beds Allocated	Avg Daily Census	Occupancy Rate	Number of Admissions	Admissions + Transfers	Patient Days	Avg Length of Stay
Broward Health Coral Springs	240	131.6	54.80%	10,345	20,666	48,016	2.3
Broward Health Imperial Point	156	50.4	32.30%	4,249	7,751	18,382	2.4
Broward Health Medical Center	570	334	58.60%	19,577	41,777	121,917	2.9
Broward Health North	379	164.4	43.40%	10,369	22,544	59,996	2.7
Cleveland Clinic Hospital	206	200.8	97.50%	14,023	14,023	73,279	5.2
HCA Florida University Hospital	133	53.4	40.20%	5,695	5,695	19,503	3.4
HCA Florida Woodmont Hospital	209	101.2	48.40%	7,785	16,945	36,925	2.2
Holy Cross Health	500	162.4	32.10%	12,463	12,463	59,292	4.8
Memorial Hospital Miramar	162	96.6	59.60%	9,505	27,337	35,255	1.3
Memorial Hospital Pembroke	301	96.7	32.10%	7,089	18,330	35,278	1.9
Memorial Hospital West	466	346.3	74.30%	22,632	22,632	126,389	5.6
Memorial Regional Hospital	641	517	80.70%	30,662	30,660	188,716	6.2
Memorial Regional Hospital South	127	15.8	12.50%	1,395	3,574	5,780	1.6
North Shore Medical Center - FMC Campus	385	93	24.20%	7,145	7,146	33,951	4.8
Northwest Medical Center	272	158.9	58.40%	13,823	13,823	57,985	4.2
Westside Regional Medical Center	250	174.8	69.90%	13,973	14,561	63,786	4.4
TOTAL	4,997	2,697.10	53.90%	190,730	279,927	984,450	3.5

* weighted average of the number of licensed beds during the year

Table 7. Long Term Care Acute Care Totals, 2022

Agency Name	Beds Allocated	Avg Daily Census	Occupancy Rate	Number of Admissions	Admissions + Transfers	Patient Days	Avg Length of Stay
Kindred Hospital - Ft. Lauderdale	61	40.6	66.60%	656	656	14,831	22.6
Kindred Hospital - Hollywood	119	46.2	38.80%	470	470	16,863	35.9
TOTAL	180	86.8	48.20%	1,126	1,126	31,694	28.1

*weighted average of the number of licensed beds during the year

HOSPITAL OTHER ACUTE CARE UTILIZATION

Table 8. Other Acute Care Services Utilization, 2022

Agency Name	Beds Allocated	Avg Daily Census	Occupancy Rate	Number of Admissions	Admissions + Transfers	Patient Days	Avg Length of Stay
Broward Health Coral Springs	34	27.6	81.2%	1,564	3,307	10,081	3
Broward Health Imperial Point	49	23.4	47.7%	1,964	3,524	8,534	2.4
Broward Health Medical Center	153	110	71.9%	6,274	11,646	40,147	3.4
Broward Health North	191	83.8	43.9%	5,541	12,186	30,592	2.5
Cleveland Clinic Hospital	66	64.1	97.1%	3,750	3,750	23,383	6.2
HCA Florida Woodmont Hospital	107	63.3	59.1%	4,160	9,717	23,096	2.4
Holy Cross Health	68	62.6	92.1%	6,352	6,352	22,096	3.6
Memorial Hospital Miramar	40	24.6	61.6%	409	2,738	8,987	3.3
Memorial Hospital Pembroke	95	58.8	61.9%	5,655	13,570	21,470	1.6
North Shore Medical Center - FMC Campus	178	38	21.3%	2,077	2,077	13,866	6.7
Northwest Medical Center	138	99.3	71.9%	7,921	7,921	36,232	4.6
Westside Regional Medical Center	88	65.1	73.9%	5,956	6,338	23,748	3.7
TOTAL	1,207	720.5	5970.0%	51,623	83,126	262,985	3.2

HOSPITAL MEDICAL SURGICAL UTILIZATION

Table 9. Medical Surgical Services Utilization, 2022

Agency Name	Beds Allocated	Avg Daily Census	Occupancy Rate	Number of Admissions	Admissions + Transfers	Patient Days	Avg Length of Stay
Broward Health Coral Springs	115	67.5	58.7%	5,243	9,318	24,632	2.6
Broward Health Imperial Point	97	21.3	22.0%	1,872	3,261	7,782	2.4
Broward Health Medical Center	196	114.4	58.4%	6,491	13,078	41,751	3.2
Broward Health North	153	55.5	36.3%	3,268	6,531	20,259	3.1
Cleveland Clinic Hospital	92	98.6	107.2%	8,390	8,390	35,993	4.3
HCA Florida University Hospital	80	38.5	48.2%	4,488	4,488	14,061	3.1
HCA Florida Woodmont Hospital	87	27.4	31.5%	2,886	5,351	10,004	1.9
Holy Cross Health	356	79.7	22.4%	4,743	4,743	29,079	6.1
Memorial Hospital Miramar	54	35.2	65.1%	6,219	14,816	12,841	0.9
Memorial Hospital Pembroke	182	28.9	15.9%	1,235	3,736	10,564	2.8
Memorial Hospital West	396	297.3	75.1%	18,756	16,888	108,508	6.4
Memorial Regional Hospital	361	343.2	95.1%	20,763	16,117	125,281	7.8
Memorial Regional Hospital South	127	15.8	12.5%	1,395	3,574	5,780	1.6
North Shore Medical Center - FMC Campus	154	30.5	19.8%	4,244	4,245	11,140	2.6
Northwest Medical Center	78	26.8	34.3%	3,101	3,101	9,767	3.1
Westside Regional Medical Center	130	84	64.6%	6,496	6,672	30,658	4.6
TOTAL	2,658	1,364.70	51.3%	99,590	124,309	498,100	4

Table 10. Long Term Care Medical Surgical Utilization, 2022

Agency Name	Beds Allocated	Avg Daily Census	Occupancy Rate	Number of Admissions	Admissions + Transfers	Patient Days	Avg Length of Stay
Kindred Hospital - Ft. Lauderdale	53	40.6	76.70%	656	656	14,831	22.6
Kindred Hospital - Hollywood	110	40.4	36.80%	374	374	14,764	39.5
TOTAL	163	81.1	49.70%	1,030	1,030	29,595	28.7

HOSPITAL CRITICAL CARE UTILIZATION

Table 11. Critical Care Utilization, 2022

Agency Name	Beds Allocated	Avg Daily Census	Occupancy Rate	Number of Admissions	Admissions + Transfers	Patient Days	Avg Length of Stay
Broward Health Coral Springs	16	14	87.60%	826	2,115	5,114	2.4
Broward Health Imperial Point	10	5.7	56.6%	413	966	2,066	2.1
Broward Health Medical Center	73	44.3	60.7%	767	4,366	16,164	3.7
Broward Health North	35	25.1	71.6%	1,560	3,827	9,145	2.4
Cleveland Clinic Hospital	48	38.1	79.4%	1,883	1,883	13,903	7.4
HCA Florida University Hospital	10	4.3	42.9%	353	353	1,567	4.4
HCA Florida Woodmont Hospital	15	10.5	69.9%	739	1,877	3,825	2
Holy Cross Health	54	19.6	36.3%	1,283	1,283	7,148	5.6
Memorial Hospital Miramar	18	7.9	43.6%	51	837	2,867	3.4
Memorial Hospital Pembroke	24	8.9	37.0%	199	1,024	3,244	3.2
Memorial Hospital West	32	21.8	68.0%	169	2,037	7,940	3.9
Memorial Regional Hospital	62	65.1	104.9%	272	4,916	23,744	4.8
North Shore Medical Center - FMC Campus	53	24.5	46.2%	824	824	8,945	10.9
Northwest Medical Center	30	18	60.1%	944	944	6,585	7
Westside Regional Medical Center	32	25.7	80.3%	1,521	1,551	9,380	6
TOTAL	512	333.3	65.1%	11,804	28,803	121,637	4.2

Table 12. Long Term Critical Care Utilization, 2022

Agency Name	Beds Allocated	Avg Daily Census	Occupancy Rate	Number of Admissions	Admissions + Transfers	Patient Days	Avg Length of Stay
Kindred Hospital - Ft. Lauderdale	8	0	0.00%	0	0	0	0
<i>Note: Does not report Admissions, Patient Days or Discharge Days for ICU/CCU Beds</i>							
Kindred Hospital - Hollywood	9	5.8	63.90%	96	96	2,099	21.9
TOTAL	17	5.8	33.80%	96	96	2,099	21.9

HOSPITAL PEDIARTIC UTILIZATION

Table 13. Pediatric Services Utilization, 2022

Agency Name	Beds Allocated	Avg Daily Census	Occupancy Rate	Number of Admissions	Admissions + Transfers	Patient Days	Avg Length of Stay
Broward Health Coral Springs	25	8.3	33.3%	923	1,862	3,035	1.6
Broward Health Medical Center	78	27.1	34.7%	1,773	3,452	9,892	2.9
HCA Florida University Hospital	10	0	0.0%	0	0	0	0
Memorial Regional Hospital	124	64.6	52.1%	4,305	4,305	23,595	5.5
Northwest Medical Center	4	0	0.0%	0	0	0	0
TOTAL	241	100.1	41.5%	7,001	9,619	36,522	3.8

HOSPITAL OBSTETRICAL UTILIZATION

Table 14. Obstetrical Services Utilization, 2022

Agency Name	Beds Allocated	Avg Daily Census	Occupancy Rate	Number of Admissions	Admissions + Transfers	Patient Days	Avg Length of Stay
Broward Health Coral Springs	49	14.1	28.8%	1,789	4,064	5,154	1.3
Broward Health Medical Center	70	38.3	54.6%	4,272	9,235	13,963	1.5
HCA Florida University Hospital	33	10.6	32.2%	854	854	3,875	4.5
Holy Cross Health	22	0.6	2.7%	85	85	216	2.5
Memorial Hospital Miramar	50	28.9	57.9%	2,826	8,946	10,560	1.2
Memorial Hospital West	38	27.2	71.7%	3,707	3,707	9,941	2.7
Memorial Regional Hospital	94	44.1	46.9%	5,322	5,322	16,096	3
Northwest Medical Center	22	14.8	67.3%	1,857	1,857	5,401	2.9
TOTAL	378	178.6	47.3%	20,712	34,070	65,206	1.9

HOSPITAL NEWBORN UTILIZATION

Table 15. Newborn Services Utilization, 2022

Agency Name	Bassinets Allocated	Avg Daily Census	Occupancy Rate	Live Births	Newborn Days	Avg Length of Stay	Still Births
Broward Health Coral Springs	16	9.4	58.5%	1,614	3,417	2.2	24
Broward Health Medical Center	39	21.6	55.5%	3,657	7,898	2.4	63
HCA Florida University Hospital	48	10.4	21.7%	1,907	3,796	2	25
Holy Cross Health	16	0.6	3.7%	77	216	2.8	1
Memorial Hospital Miramar	24	21.7	90.4%	4,178	7,920	1.9	42
Memorial Hospital West	38	19.8	52.2%	3,668	7,245	2	32
Memorial Regional Hospital	60	26.8	44.7%	5,128	9,789	1.9	35
Northwest Medical Center	14	8.8	62.9%	1,629	3,216	2	10
TOTAL	255	119.2	46.7%	21,858	43,497	2	232

HEALTH NEONATAL UTILIZATION

Table 16. Level II Neonatal Services Utilization, 2022

Agency Name	Beds Licensed	Avg Daily Census	Occupancy Rate	Number of Admissions	Admissions + Transfers	Patient Days	Avg Length of Stay
Broward Health Coral Springs	10	6.1	61.5%	134	206	2,243	10.9
Broward Health Medical Center	36	21.9	60.8%	120	523	7,983	15.3
HCA Florida University Hospital	14	9.6	68.9%	78	156	3,519	22.6
Holy Cross Health	9	0.1	1.2%	10	10	40	4
Memorial Hospital Miramar	16	9.7	60.4%	364	372	3,527	9.5
Memorial Hospital West	20	9.3	46.4%	387	387	3,390	8.8
Memorial Regional Hospital	22	37.5	170.4%	281	820	13,685	16.7
Northwest Medical Center	6	4.3	71.7%	12	12	1,570	130.8
TOTAL	133	98.5	74.1%	1,386	2,486	35,957	14.5

Table 17. Level III Neonatal Services, Utilization, 2022

Agency Name	Beds Licensed	Avg Daily Census	Occupancy Rate	Number of Admissions	Admissions + Transfers	Patient Days	Avg Length of Stay
Broward Health Medical Center	34	18.5	54.3%	851	1,711	6,738	3.9
HCA Florida University Hospital	18	9.2	51.1%	182	217	3,354	15.5
Memorial Regional Hospital	62	34	54.9%	667	1,451	12,414	8.6
Northwest Medical Center	11	7	63.3%	223	223	2,543	11.4
TOTAL	125	68.6	54.9%	1,923	3,602	25,049	7

HOSPITAL REHABILITATIVE UTILIZATION

Table 18. Rehabilitative Services Utilization, 2022

Agency Name	Beds Licensed	Avg Daily Census	Occupancy Rate	Number of Admissions	Admissions + Transfers	Patient Days	Avg Length of Stay
Broward Health North	30	23.6	78.6%	707	714	8,605	12.1
Encompass Health Rehabilitation Hospital Of Sunrise	126	88.8	70.5%	2,327	2,327	32,428	13.9
HCA Florida Woodmont Hospital	16	11.3	70.5%	312	315	4,120	13.1
Holy Cross Health	48	36.9	76.9%	947	947	13,477	14.2
Kindred Hospital - Ft. Lauderdale	11	8.7	78.8%	233	233	3,164	13.6
Memorial Regional Hospital	6	2.3	38.2%	60	75	836	11.1
Memorial Regional Hospital South	89	74.2	83.3%	2,173	2,542	27,071	10.6
St. Anthony's Rehab Hospital	26	13.5	52.0%	337	292	4,938	16.9
TOTAL	352	259.3	73.7%	7,096	7,445	94,639	12.7

HOSPITAL PSYCHIATRIC UTILIZATION

Table 19. Adult Psychiatric Utilization, 2022

Agency Name	Beds Licensed	Avg Daily Census	Occupancy Rate	Number of Admissions	Admissions + Transfers	Patient Days	Avg Length of Stay
Broward Health Imperial Point	47	28	59.5%	1,732	2,596	10,215	3.9
Broward Health Medical Center	83	41.4	49.9%	2,602	4,834	15,108	3.1
Ft. Lauderdale Behavioral Health Center	92	81.4	88.5%	4,443	4,443	29,713	6.7
HCA Florida Woodmont Hospital	52	48.8	93.9%	2,201	3,351	17,816	5.3
Larkin Community Hospital Behavioral Health Services	40	33.7	84.1%	1,207	1,207	12,284	10.2
Memorial Regional Hospital	54	40.1	74.3%	1,082	2,797	14,638	5.2
North Shore Medical Center - FMC Campus	74	18.3	24.7%	999	999	6,684	6.7
TOTAL	442	291.7	66.0%	14,266	20,227	106,458	5.3

Table 20. Child/Adolescent Psychiatric Utilization, 2022

Agency Name	Beds Licensed	Avg Daily Census	Occupancy Rate	Number of Admissions	Admissions + Transfers	Patient Days	Avg Length of Stay
Ft. Lauderdale Behavioral Health Center	44	29.3	66.6%	2,244	2,244	10,688	4.8
HCA Florida Woodmont Hospital	8	6.9	85.7%	485	574	2,502	4.4
Larkin Community Hospital Behavioral Health Services	9	2.1	23.5%	144	144	772	5.4
Memorial Regional Hospital	12	10.3	85.8%	16	946	3,758	4
TOTAL	73	48.5	66.5%	2,889	3,908	17,720	4.5

HOSPITAL SUBSTANCE ABUSE UTILIZATION

Table 21. Adult Substance Abuse Utilization, 2022

Agency Name	Beds Licensed	Avg Daily Census	Occupancy Rate	Number of Admissions	Admissions + Transfers	Patient Days	Avg Length of Stay
Ft. Lauderdale Behavioral Health Center	46	14.7	32.0%	760	760	5,370	7.1
TOTAL	46	14.7	32.0%	760	760	5,370	7.1

OPEN HEART, CATHETERIZATION & ANGIOPLASTIES

Table 22. Adult Open Heart, Catherizations and Angioplasties, 2022

Agency Name	Open Heart	Cathe Inpatient	Cathe Outpatient	Angio Inpatient	Angio Outpatient	Cathe + Angio Total
Broward Health Coral Springs	0	160	177	167	90	594
Broward Health Imperial Point	0	70	46	61	62	239
Broward Health Medical Center	298	362	226	523	218	1,329
Broward Health North	0	151	108	185	104	548
Cleveland Clinic Hospital	74	757	1,045	0	0	1,802
HCA Florida University Hospital	0	66	78	0	0	144
Holy Cross Health	194	951	1,261	538	538	3,288
Memorial Hospital West	0	1,040	609	475	215	2,339
Memorial Regional Hospital	778	1,317	1,102	523	451	3,393
North Shore Medical Center - FMC Campus	51	429	91	60	7	587
Northwest Medical Center	110	824	717	432	390	2,363
Westside Regional Medical Center	241	1,029	832	264	229	2,354
TOTAL	1,746	7,156	6,292	3,228	2,304	18,980

Table 23. Pediatric Open Heart, Catherizations and Angioplasties, 2022

Agency Name	Open Heart	Cathe Inpatient	Cathe Outpatient	Angio Inpatient	Angio Outpatient	Cathe + Angio Total
Cleveland Clinic Hospital	0	0	0	59	96	155
Memorial Regional Hospital	134	63	55	2	0	120
North Shore Medical Center - FMC Campus	0	4	0	0	0	4
TOTAL	134	67	55	61	96	279

Figure 2. Broward County Catherizations, Adult, 2022

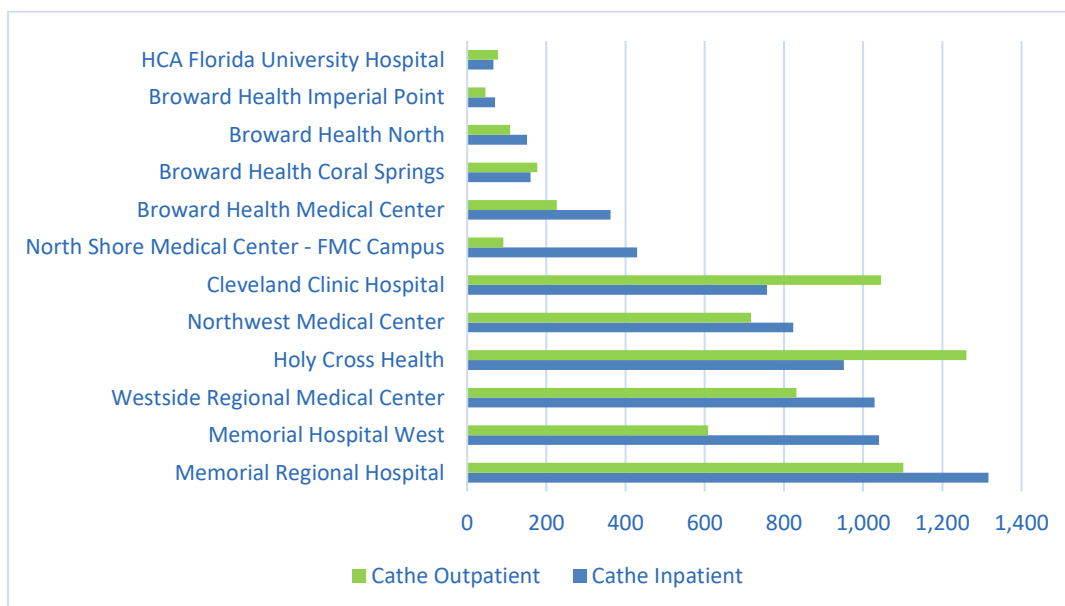
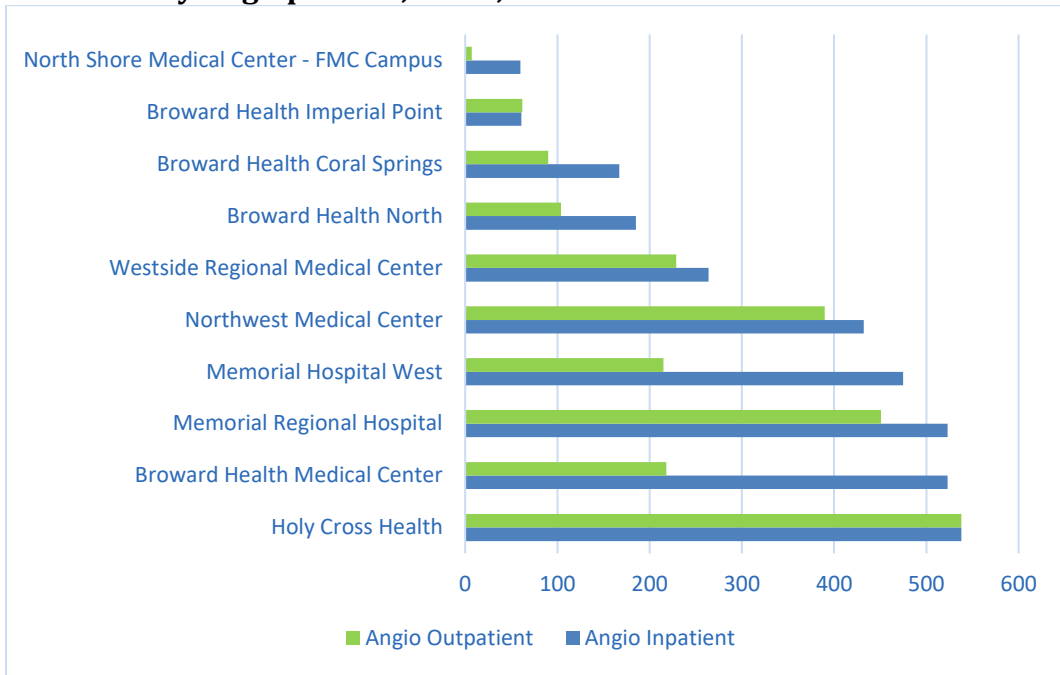


Figure 2. Broward County Angioplasties, Adult, 2022



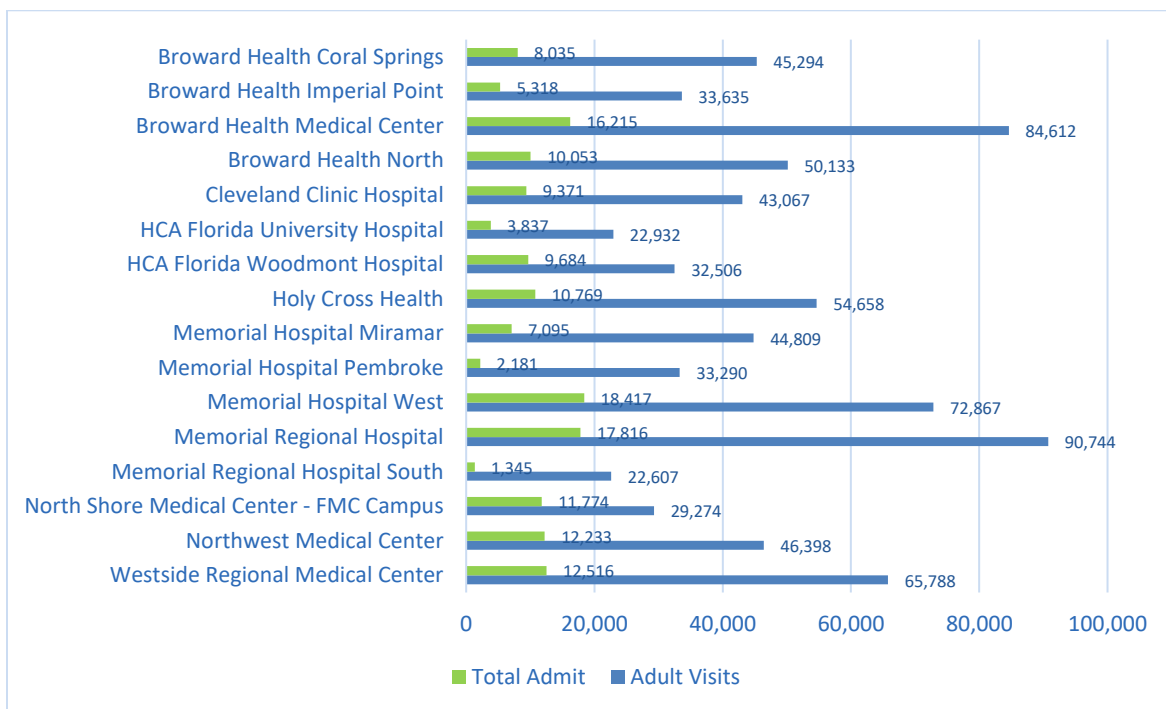
EMERGENCY DEPARTMENT UTILIZATION

Table 24 displays emergency department utilization for 2022. There was a total of 986,831 emergency department visits, of these, 15.2% were admitted.

Table 24. Emergency Department Utilization, 2022

Agency Name	Adult Visits	Pediatric Visits	Total Visits	Adult Admit	Pediatric Admit	Total Admit
Broward Health Coral Springs	45,294	23,527	68,821	7,107	928	8,035
Broward Health Imperial Point	33,635	2,105	35,740	5,318	0	5,318
Broward Health Medical Center	84,612	26,943	111,555	14,472	1,743	16,215
Broward Health North	50,133	4,932	55,065	10,047	6	10,053
Cleveland Clinic Hospital	43,067	1,706	44,773	9,354	17	9,371
HCA Florida University Hospital	22,932	3,461	26,393	3,837	0	3,837
HCA Florida Woodmont Hospital	32,506	4,431	36,937	9,684	0	9,684
Holy Cross Health	54,658	3,311	57,969	10,766	3	10,769
Memorial Hospital Miramar	44,809	19,772	64,581	7,070	25	7,095
Memorial Hospital Pembroke	33,290	1,775	35,065	2,181	0	2,181
Memorial Hospital West	72,867	20,616	93,483	18,397	20	18,417
Memorial Regional Hospital	90,744	79,755	170,499	14,228	3,588	17,816
Memorial Regional Hospital South	22,607	825	23,432	1,343	2	1,345
North Shore Medical Center - FMC Campus	29,274	2,212	31,486	11,773	1	11,774
Northwest Medical Center	46,398	7,502	53,900	12,226	7	12,233
Westside Regional Medical Center	65,788	11,344	77,132	12,516	0	12,516
TOTAL	772,614	214,217	986,831	150,319	6,340	156,659

Figure 4. Emergency Department Utilization Visits vs. Admissions, 2022



HOSPITAL PROCEDURES

Table 25. Procedures: Surgical Operations, 2022

Agency Name	Inpatient	Outpatient	Total
Broward Health Coral Springs	1,739	2,964	4,703
Broward Health Imperial Point	972	3,559	4,531
Broward Health Medical Center	5,030	4,425	9,583
Broward Health North	2,784	2,617	5,401
Cleveland Clinic Hospital	5,088	7,686	12,774
HCA Florida University Hospital	2,308	1,844	4,152
HCA Florida Woodmont Hospital	2,261	2,042	4,303
Holy Cross Health	2,683	5,242	7,925
Kindred Hospital - Ft. Lauderdale	14	0	14
Kindred Hospital - Hollywood	397	0	397
Memorial Hospital Miramar	941	5,835	6,776
Memorial Hospital Pembroke	1,509	3,005	4,514
Memorial Hospital West	3,423	5,792	9,215
Memorial Regional Hospital	6,458	11,807	18,265
Memorial Regional Hospital South	190	3,404	3,594
North Shore Medical Center - FMC Campus	1,872	1,378	3,250
Northwest Medical Center	3,621	3,547	7,168
Westside Regional Medical Center	4,190	2,584	6,774
TOTAL	45,480	67,731	113,211

Table 26. Procedures: Physical Therapy, 2022

Agency Name	Inpatient	Outpatient	Total
Broward Health Coral Springs	20,213	32,269	52,482
Broward Health Imperial Point	7,793	34,290	42,083
Broward Health Medical Center	33,430	27,711	61,141
Broward Health North	36,794	21,251	58,045
Cleveland Clinic Hospital	36,147	5,487	41,634
HCA Florida University Hospital	22,294	5,316	27,610
HCA Florida Woodmont Hospital	38,054	2,521	40,575
Holy Cross Health	101,515	186,904	288,419
Kindred Hospital - Ft. Lauderdale	21,101	0	21,101
Memorial Hospital Miramar	4,699	54,269	58,968

Memorial Hospital Pembroke	8,644	687	9,331
Memorial Hospital West	41,686	150,886	192,572
Memorial Regional Hospital	36,315	13,632	49,947
Memorial Regional Hospital South	111,194	65,121	176,315
North Shore Medical Center - FMC Campus	42,583	25,085	67,668
Northwest Medical Center	28,043	9,375	37,418
Westside Regional Medical Center	42,820	9,425	52,245
TOTAL	633,325	644,229	1,277,554

Table 27. Procedures: Occupational Therapy, 2022

Agency Name	Inpatient	Outpatient	Total
Broward Health Coral Springs	4,324	22,463	26,787
Broward Health Medical Center	14,597	12,273	26,870
Broward Health North	7,942	7,699	15,641
Cleveland Clinic Hospital	19,058	1,770	20,828
HCA Florida University Hospital	1,839	175	2,014
HCA Florida Woodmont Hospital	12,902	21	12,923
Holy Cross Health	108,147	30,129	138,276
Kindred Hospital - Ft. Lauderdale	14,779	0	14,779
Memorial Hospital Miramar	2,533	11,294	13,827
Memorial Hospital Pembroke	2,271	102	2,373
Memorial Hospital West	15,758	22,740	38,498
Memorial Regional Hospital	30,568	11,589	42,157
Memorial Regional Hospital South	109,898	6,590	116,488
North Shore Medical Center - FMC Campus	14,559	4,874	19,433
Northwest Medical Center	15,674	1,427	17,101
Westside Regional Medical Center	12,743	979	13,722
TOTAL	387,592	134,125	521,717

Table 28. Procedures: Speech Therapy, 2022

Agency Name	Inpatient	Outpatient	Total
Broward Health Coral Springs	2,821	6,958	9,779
Broward Health Imperial Point	469	264	733
Broward Health Medical Center	5,761	1,917	7,678
Broward Health North	3,629	965	4,594
Cleveland Clinic Hospital	3,369	893	4,262

HCA Florida University Hospital	6,995	1,020	8,015
HCA Florida Woodmont Hospital	3,524	89	3,613
Holy Cross Health	9,895	1,944	11,839
Kindred Hospital - Ft. Lauderdale	4,956	0	4,956
Memorial Hospital Miramar	1,524	4,626	6,150
Memorial Hospital Pembroke	1,358	143	1,501
Memorial Hospital West	7,833	9,108	16,941
Memorial Regional Hospital	8,035	8,375	16,410
Memorial Regional Hospital South	8,882	695	9,577
North Shore Medical Center - FMC Campus	10,483	1,057	11,540
Northwest Medical Center	8,946	967	9,913
Westside Regional Medical Center	15,173	1,148	16,321
TOTAL	103,653	40,169	143,822

Table 29. Procedures: Laboratory, 2022

Agency Name	Inpatient	Outpatient	Total
Broward Health Coral Springs	359,775	342,312	702,087
Broward Health Imperial Point	162,290	194,603	356,893
Broward Health Medical Center	910,298	544,454	1,454,752
Broward Health North	442,103	319,612	761,715
Cleveland Clinic Hospital	684,475	559,229	1,243,704
HCA Florida University Hospital	111,683	87,973	199,656
HCA Florida Woodmont Hospital	249,111	134,193	383,304
Holy Cross Health	505,198	809,874	1,315,072
Kindred Hospital - Ft. Lauderdale	25,344	0	25,344
Memorial Hospital Miramar	276,710	301,715	578,425
Memorial Hospital Pembroke	200,852	246,665	447,517
Memorial Hospital West	774,125	497,202	1,271,327
Memorial Regional Hospital	1,081,984	664,137	1,746,121
Memorial Regional Hospital South	88,151	109,477	197,628
North Shore Medical Center - FMC Campus	374,086	139,566	513,652
Northwest Medical Center	357,340	178,120	535,460
Westside Regional Medical Center	363,686	196,800	560,486
TOTAL	6,967,211	5,325,932	12,293,143

Table 30. Procedures: CT Scans, 2022

Agency Name	Inpatient	Outpatient	Total
Broward Health Coral Springs	9,509	22,901	32,410
Broward Health Imperial Point	4,137	11,516	15,653
Broward Health Medical Center	24,130	38,100	62,230
Broward Health North	19,785	26,199	45,984
Cleveland Clinic Hospital	29,320	69,914	99,234
HCA Florida University Hospital	3,355	7,588	10,943
HCA Florida Woodmont Hospital	6,942	12,558	19,500
Holy Cross Health	14,067	24,186	38,253
Kindred Hospital - Ft. Lauderdale	828	0	828
Kindred Hospital - Hollywood	333	0	333
Memorial Hospital Miramar	5,091	19,664	24,755
Memorial Hospital Pembroke	4,505	13,239	17,744
Memorial Hospital West	18,848	26,848	45,696
Memorial Regional Hospital	29,778	37,258	67,036
Memorial Regional Hospital South	2,511	12,777	15,288
North Shore Medical Center - FMC Campus	6,670	8,838	15,508
Northwest Medical Center	14,110	15,281	29,391
Westside Regional Medical Center	17,155	17,896	35,051
TOTAL	211,074	364,763	575,837

Table 31. Procedures: MRI, 2022

Agency Name	Inpatient	Outpatient	Total
Broward Health Coral Springs	1,833	2,743	4,576
Broward Health Imperial Point	684	932	1,616
Broward Health Medical Center	3,448	3,288	6,736
Broward Health North	3,056	2,592	5,648
Cleveland Clinic Hospital	4,835	30,215	35,050
HCA Florida University Hospital	696	496	1,192
HCA Florida Woodmont Hospital	1,567	253	1,820
Holy Cross Health	2,226	6,725	8,951
Memorial Hospital Miramar	1,450	7,413	8,863
Memorial Hospital Pembroke	1,353	3,388	4,741
Memorial Hospital West	5,391	7,180	12,571
Memorial Regional Hospital	7,540	11,793	19,333

Memorial Regional Hospital South	596	5,858	6,454
North Shore Medical Center - FMC Campus	1,228	649	1,877
Northwest Medical Center	2,459	1,182	3,641
Westside Regional Medical Center	3,140	1,127	4,267
TOTAL	41,502	85,834	127,336

Table 32. Procedures: Ultrasound, 2022

Agency Name	Inpatient	Outpatient	Total
Broward Health Coral Springs	6,658	19,433	26,091
Broward Health Imperial Point	2,392	6,848	9,240
Broward Health Medical Center	16,415	25,842	42,257
Broward Health North	7,111	7,935	15,046
Cleveland Clinic Hospital	10,121	30,107	40,228
HCA Florida University Hospital	7,082	6,552	13,634
HCA Florida Woodmont Hospital	4,299	3,024	7,323
Holy Cross Health	6,248	23,054	29,302
Kindred Hospital - Ft. Lauderdale	495	0	495
Kindred Hospital - Hollywood	612	0	612
Memorial Hospital Miramar	7,176	22,614	29,790
Memorial Hospital Pembroke	3,265	7,051	10,316
Memorial Hospital West	17,034	32,975	50,009
Memorial Regional Hospital	20,168	32,810	52,978
Memorial Regional Hospital South	1,364	6,888	8,252
North Shore Medical Center - FMC Campus	3,388	3,058	6,446
Northwest Medical Center	15,114	13,073	28,187
Westside Regional Medical Center	8,844	6,543	15,387
TOTAL	137,786	247,807	385,593

Table 33. Procedures: Nuclear Medicine, 2022

Agency Name	Inpatient	Outpatient	Total
Broward Health Coral Springs	599	778	1,377
Broward Health Imperial Point	313	921	1,234
Broward Health Medical Center	949	1,471	2,420
Broward Health North	719	1,073	1,792
Cleveland Clinic Hospital	959	10,075	11,034

HCA Florida University Hospital	454	396	850
HCA Florida Woodmont Hospital	673	127	800
Holy Cross Health	1,053	2,030	3,083
Kindred Hospital - Hollywood	8	0	8
Memorial Hospital Miramar	316	819	1,135
Memorial Hospital Pembroke	263	337	600
Memorial Hospital West	1,127	1,423	2,550
Memorial Regional Hospital	919	1,567	2,486
Memorial Regional Hospital South	95	429	524
North Shore Medical Center - FMC Campus	419	206	625
Northwest Medical Center	2,098	1,485	3,583
Westside Regional Medical Center	1,541	1,094	2,635
TOTAL	12,505	24,231	36,736

Table 34. All Other Radiological, 2022

Agency Name	Inpatient	Outpatient	Total
Broward Health Coral Springs	19,415	41,643	61,058
Broward Health Imperial Point	8,437	19,124	27,561
Broward Health Medical Center	65,431	68,005	133,436
Broward Health North	32,678	36,222	68,900
Cleveland Clinic Hospital	39,098	44,901	83,999
HCA Florida University Hospital	7,183	11,042	18,225
HCA Florida Woodmont Hospital	11,975	21,463	33,438
Holy Cross Health	36,485	50,162	86,647
Kindred Hospital - Ft. Lauderdale	2,972	0	2,972
Kindred Hospital - Hollywood	5,008	0	5,008
Memorial Hospital Miramar	11,178	30,906	42,084
Memorial Hospital Pembroke	8,928	33,382	42,310
Memorial Hospital West	37,070	44,177	81,247
Memorial Regional Hospital	87,701	86,537	174,238
Memorial Regional Hospital South	4,737	19,413	24,150
North Shore Medical Center - FMC Campus	16,116	15,283	31,399
Northwest Medical Center	24,408	24,360	48,768
Westside Regional Medical Center	36,567	28,909	65,476
TOTAL	455,387	575,529	1,030,916

Table 35. Shock Wave, 2022

Agency Name	Inpatient	Outpatient	Total
HCA Florida University Hospital	10	0	10
HCA Florida Woodmont Hospital	3	16	19
Holy Cross Health	11	48	59
North Shore Medical Center - FMC Campus	1	5	6
Northwest Medical Center	46	26	72
TOTAL	71	95	166

Table 36. Procedures: Adult Transplants, 2022

Agency Name	Heart	Bone Marrow	Liver	Kidney	Lung	Pancreas	Intestine	Total
Broward Health Medical Center	0	0	13	11	0	0	0	24
Cleveland Clinic Hospital	25	0	27	108	0	0	0	160
Memorial Hospital West	0	94	0	0	0	0	0	94
Memorial Regional Hospital	8	0	0	121	0	0	0	129
TOTAL	33	94	40	240	0	0	0	407

Table 37. Procedures: Pediatric Transplants, 2022

Agency Name	Heart	Bone Marrow	Liver	Kidney	Lung	Pancreas	Intestine	Total
Memorial Regional Hospital	6	0	0	3	0	0	0	9
TOTAL	6	0	0	3	0	0	0	9

Table 38. Procedures: Mammography, 2022

Agency Name	Inpatient	Outpatient	Total
Broward Health Coral Springs	0	5,236	5,236
Broward Health Imperial Point	0	1,887	1,887
Broward Health Medical Center	0	5,325	5,325
Broward Health North	0	1,320	1,320
Cleveland Clinic Hospital	29	15,596	15,625
HCA Florida University Hospital	2	472	474
Holy Cross Health	6	22,929	22,935
Memorial Hospital Miramar	13	25,916	25,929
Memorial Hospital West	5	13,526	13,531
Memorial Regional Hospital	33	788	821
Memorial Regional Hospital South	15	26,449	26,464
Northwest Medical Center	3	2,476	2,479
Westside Regional Medical Center	7	2,522	2,529
TOTAL	113	124,442	124,555

Table 39. Procedures: Pet Scan, 2022

Agency Name	Inpatient	Outpatient	Total
Broward Health Medical Center	0	435	435
Broward Health North	0	409	409
Cleveland Clinic Hospital	19	2,430	2,449
Holy Cross Health	8	1,166	1,174
Westside Regional Medical Center	0	15	15
TOTAL	27	4,455	4,482

A subscription to the Health Data Warehouse is available (for a fee) upon request. For more information, please email utilization@brhpc.org