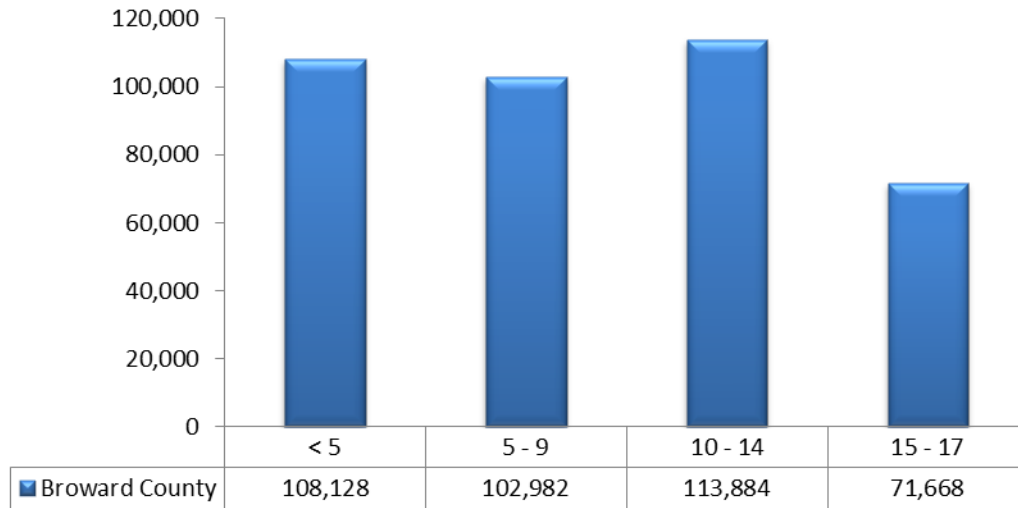


### District 9, MATERNAL AND CHILD HEALTH

June 2012

In 2010, children represented 24.8% of the Broward County population.

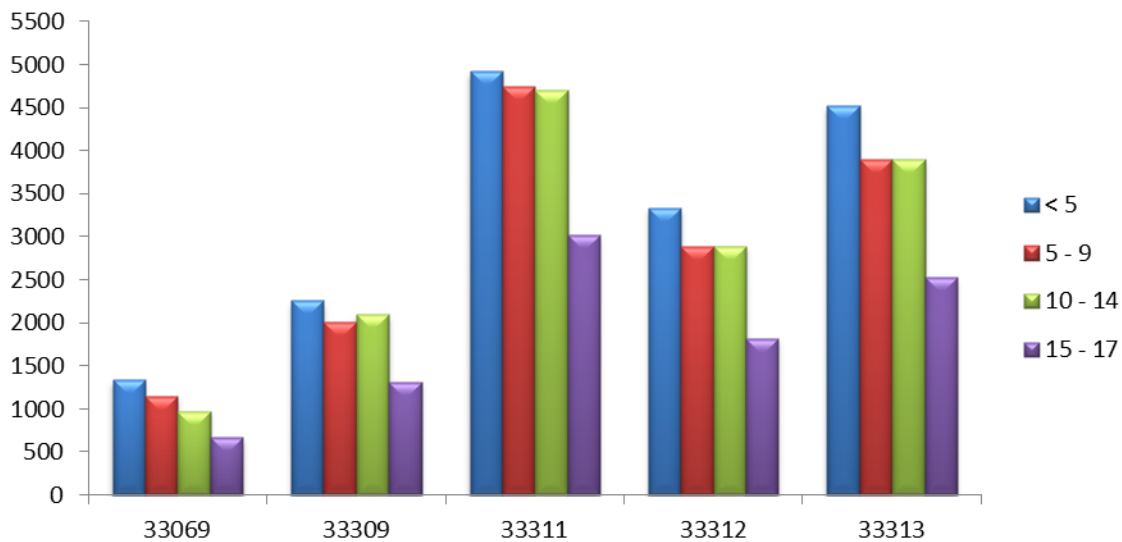
**Broward County Population ≤ 17 Years of Age, 2010**



Source: Florida Charts

Children under 5 years of age comprise the majority of the child population within Broward County Commission District 9 and zip code 33069, at approximately 30% of the total for each zip code.

**Population ≤ 17 Years of Age, 2010**

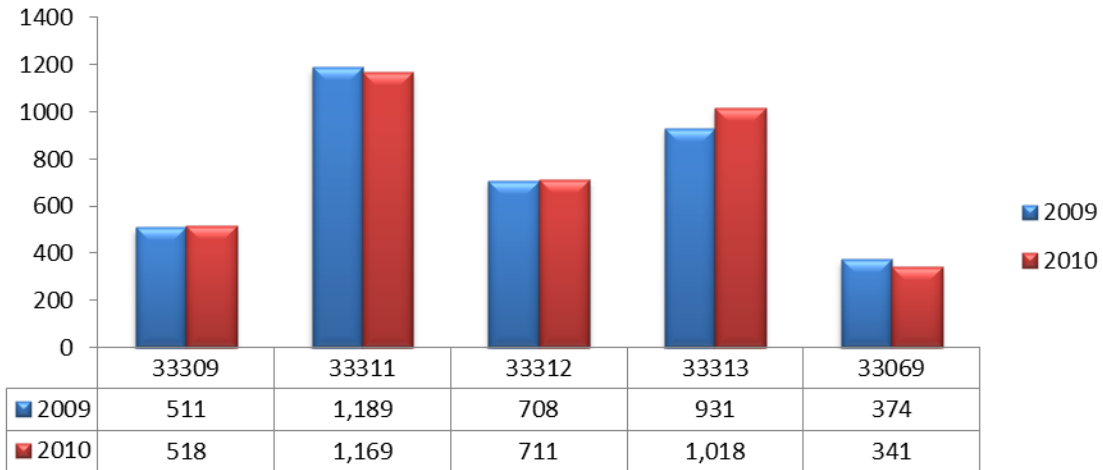


Source: Florida Charts

## BIRTH COUNTS

The total number of births for District 9 and zip code 33069 has remained relatively similar for both years, with zip code 33313 having the largest increase at 87 more births from 2009 to 2010. There was a decline in the number of births for both 33069 and 33311. Nevertheless, there has been a significantly higher number of births to mothers within zip code 33311. On the other hand, zip code 33069 has the lowest number of births.

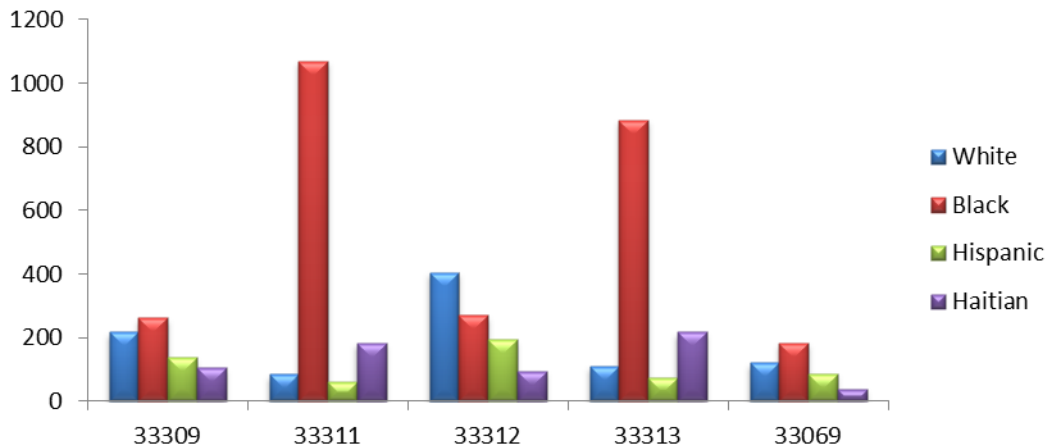
**Total Number of Births, 2009 & 2010**



Source: Florida Charts

The graph below depicts the difference in total births by race and ethnicity. The highest birth totals are found within the Black population, excluding zip code 33312, which saw the highest birth totals in the White population. In zip codes 33311 and 33313, 76% and 69% of births were within the Black population, respectively.

**Total Number of Births by Race/Ethnicity, 2010**



Source: Florida Charts

## TEEN BIRTHS

The majority of births to mothers under the age of 19 were in zip codes 33311 and 33313. Among 15 – 17 year olds, as well as 18 – 19 year olds the highest birth totals were recorded from zip code 33311.

**Broward County Commission District 9 Births to Mothers ≤19 Years Old, 2010**

	Broward County	District 9				
		33309	33311	33312	33313	33069
Age						
0 – 14	250	1	2	0	3	1
15 – 17	5,398	14	50	22	32	11
18 - 19	13,744	20	125	45	78	18
<b>TOTAL</b>	<b>19,392</b>	<b>35</b>	<b>177</b>	<b>67</b>	<b>113</b>	<b>30</b>

Zip code 33311 had the highest number of repeat births to mothers under 19 years old when compared to the other zip codes. The number of repeat births for zip code 33311, comprise 20% of the overall Broward County total.

**Broward County Commission District 9 Repeat Births to Mothers ≤19 Years Old, 2010**

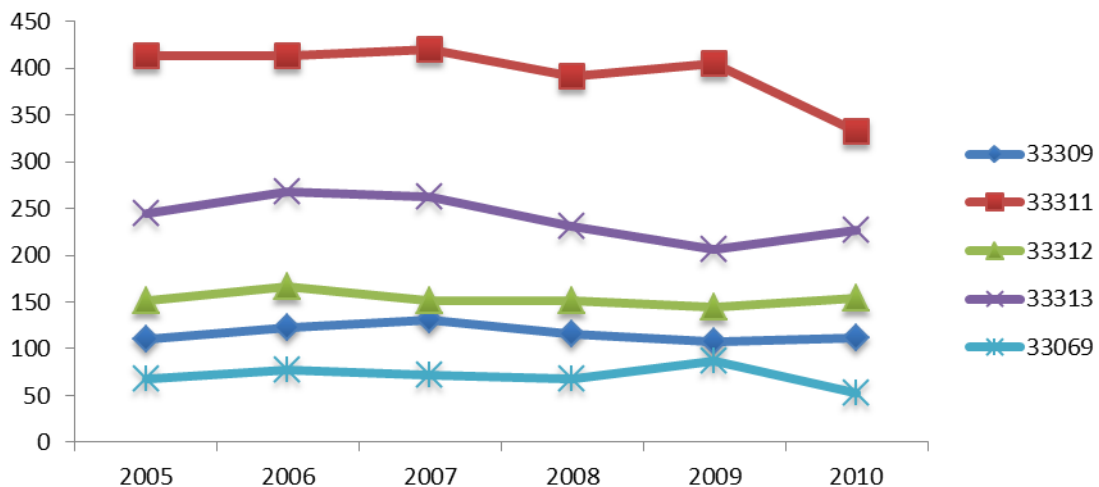
	Broward County	District 9				
		33309	33311	33312	33313	33069
Age						
0 – 14	0	0	0	0	0	1
15 – 17	37	2	7	3	4	11
18 - 19	189	2	38	15	24	18
<b>TOTAL</b>	<b>226</b>	<b>4</b>	<b>45</b>	<b>18</b>	<b>28</b>	<b>30</b>

Source: Florida Charts

## MOTHER'S AT RISK

Children's outcomes are closely tied to their mother's risk factors. One important risk factor is a mother's education. The figure below depicts the number of births to mothers without a high school education.

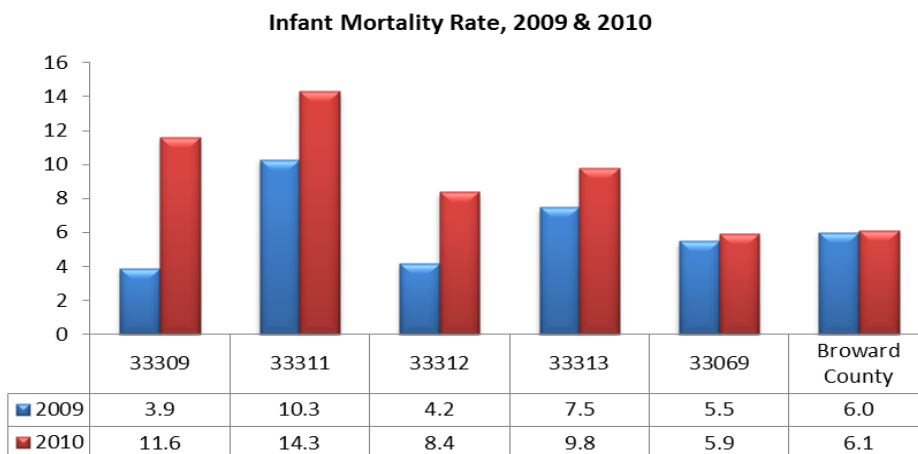
**Births to Mothers Without a High School Education, 2005 - 2010**



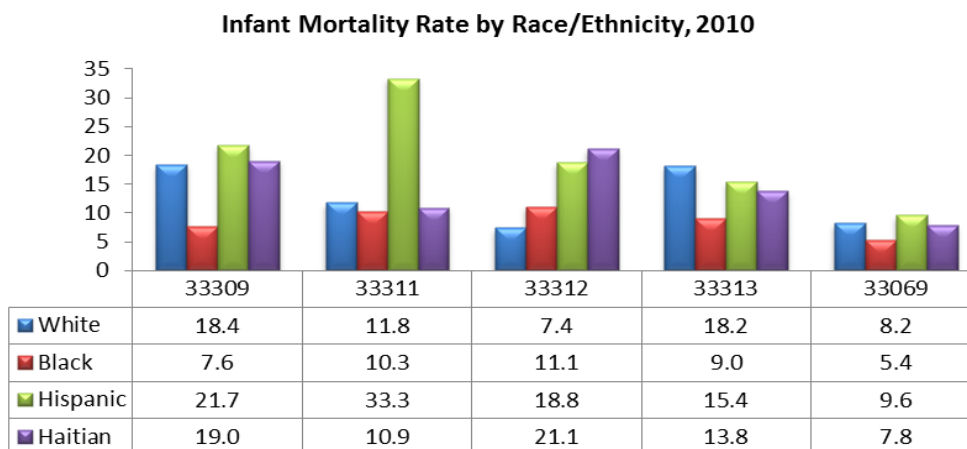
Source: Florida Charts

## INFANT MORTALITY

The following figure illustrates the rate of infants (per 1,000 births) who died before their first birthday. In Broward, the infant mortality rate has remained constant from 2009 to 2010; while in District 9 and zip code 33069, there is an increase in the rate from 2009 to 2010. The infant mortality rate in zip code 33309, increased by nearly three times the amount from 2009 to 2010; and zip code 33311 has had a consistently higher infant mortality rate, with the 2010 rate being approximately 2.5 times larger than the Broward County rate.



Source: Florida Charts



Source: Florida Charts

In zip code 33311, the infant mortality rate by race/ethnicity is relatively the same for the White, Black, and Haitian populations, but the Hispanic population has a rate that is about three times larger than the other populations. Within the other zip codes, the Hispanic population has either the highest or second highest rate, when it comes to infant mortality. The lowest infant mortality rate for all zip codes is seen within the Black population, excluding zip code 33312.

---

**Broward Regional Health Planning Council, Inc.** is a non-profit organization committed to delivering health and human service innovations at a national, state and local level through planning, direct services, evaluation and organizational capacity building. For additional information, please contact Regine Kanzki, MPH, Division Director, [rkanzki@brhpc.org](mailto:rkanzki@brhpc.org) or visit [www.BRHPC.org](http://www.BRHPC.org).

The entire **Broward County Health Plan** is available online ([www.BRHPC.org](http://www.BRHPC.org)).