

2019

Broward County Health Profile



www.brhpc.org

Broward Regional Health Planning Council, Inc. is committed to delivering health and human service innovations at the national, state and local level through planning, direct services, evaluation and organizational capacity building.

About Broward County Health Profile

Broward Regional Health Planning Council's Broward County Health Profile provides a synopsis of Broward County health indicators. It is a compilation of statistics at the county and state levels; including population demographics, socioeconomic factors, leading causes of death, infectious diseases, maternal and child health and healthcare utilization.



BOARD OF DIRECTORS

Barbara Effman M.P.H., Chair

John Benz, MBA Vice Chair

Mark Dissette, MBA., Treasurer

Samuel F. Morrison, BA, MLS, Secretary

Pamela B. Africk

Lee Chaykin, FACHE

Osmel Delgado, MBA, PharmD, FASHP

Vince L. Johnson, MPH

Albert C. Jones MA

Leilani Kicklighter, MBA, ARM, RN

C. Kennon Hetlage, FACHE

Cary Zinkin, D.P.M.

Michael De Lucca, MHM
President and CEO

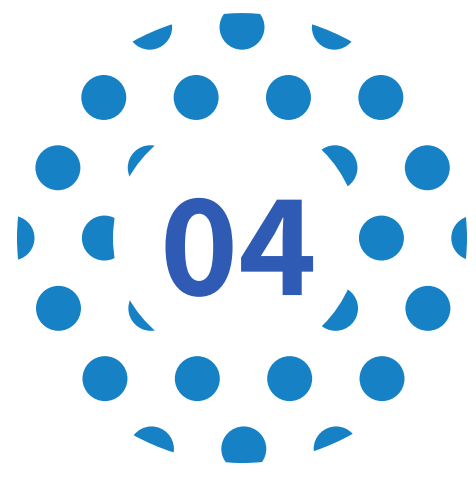
For information, contact:

Shira Fowlkes, MPH
Data Manager
sfowlkes@brhpc.org

Broward Regional Health Planning Council

200 Oakwood Lane, suite 100
Hollywood, FL 33020
954-561-9681

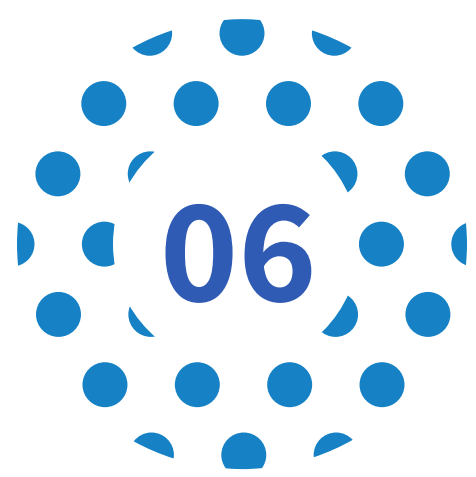
Table of Contents



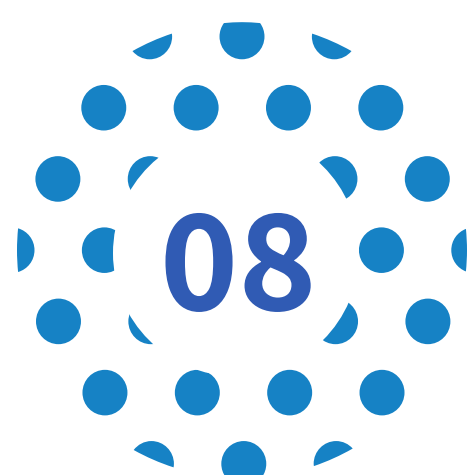
Demographic Profile



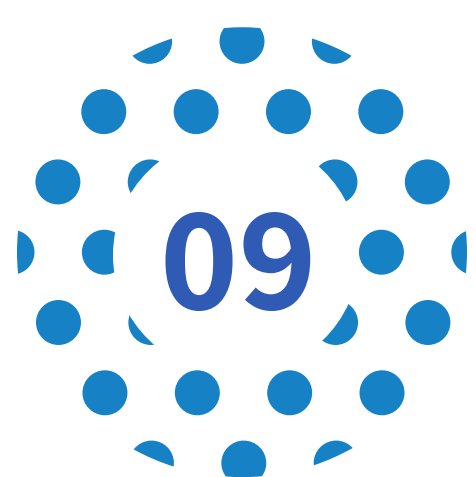
Economic Profile



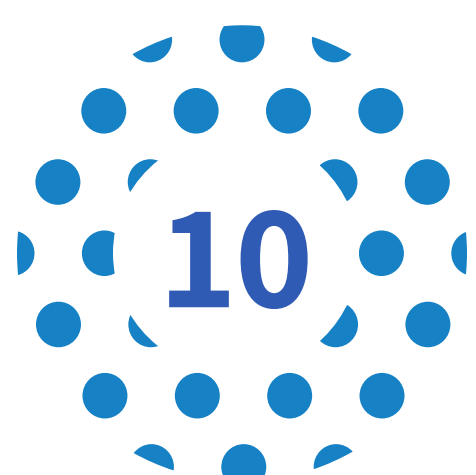
Maternal & Child Health Profile



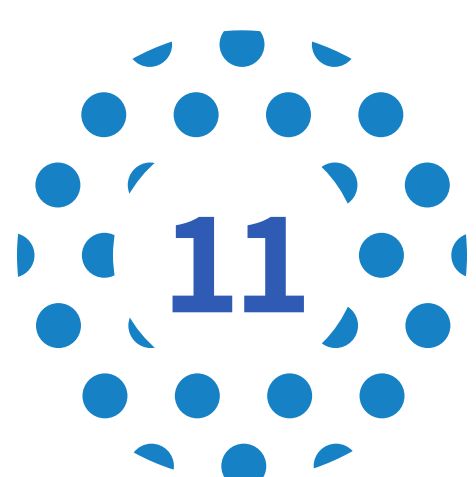
Communicable Disease Profile



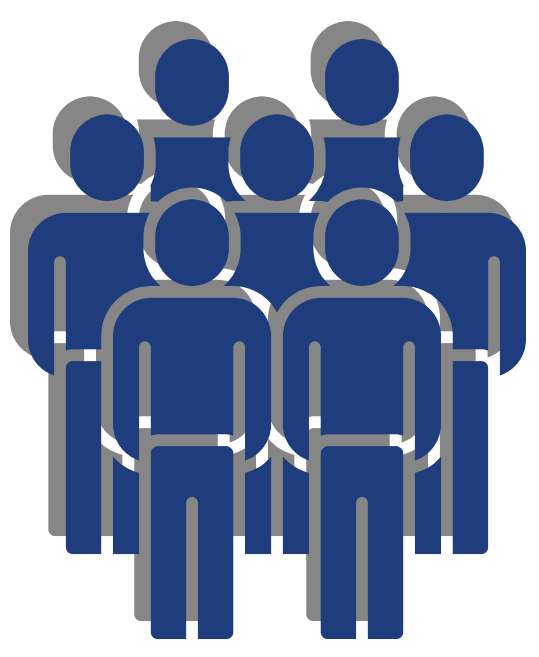
Chronic Disease Profile



Medical Facility Utilization Profile



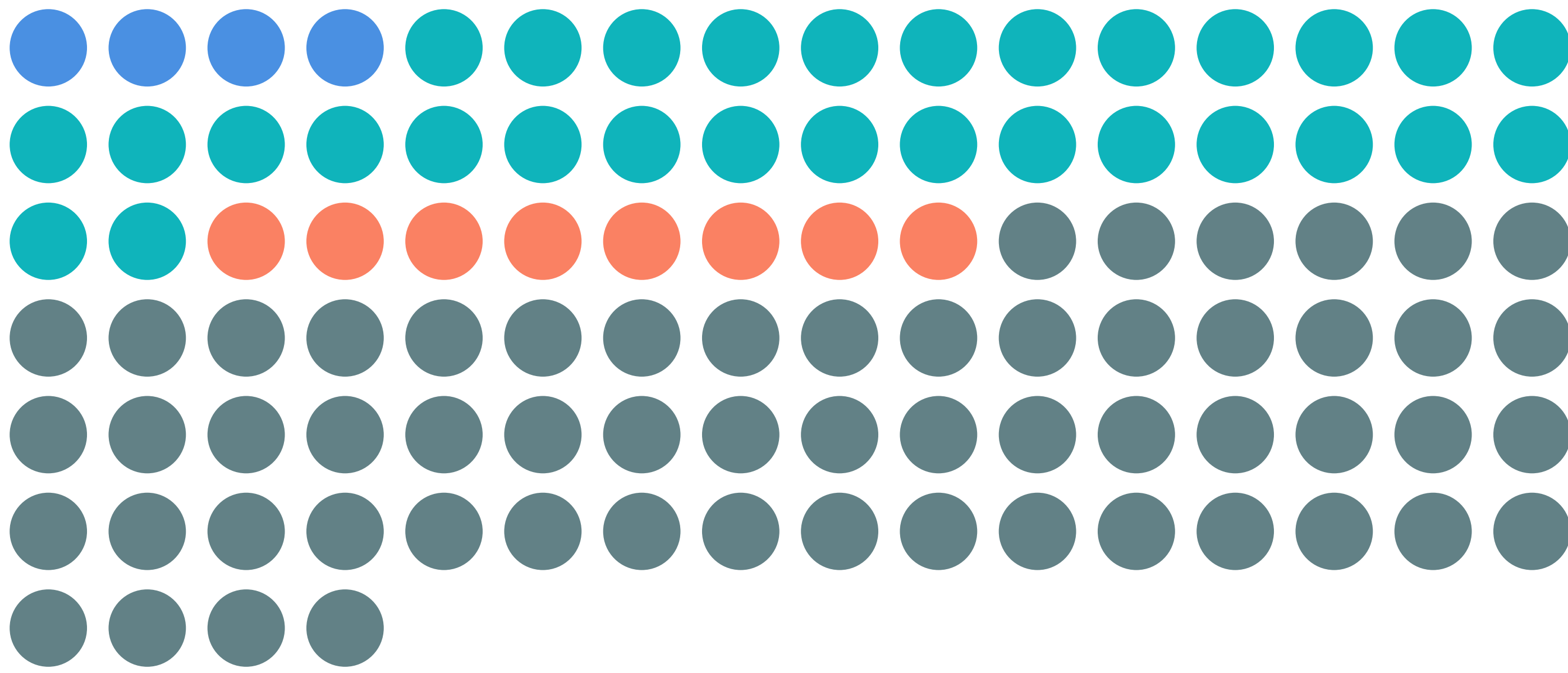
Social & Education Profile



Demographic Profile

Total Population

1,967,831



■ Asian (3.82%)
 ■ Black (29.64%)
 ■ Native American (0.31%)
 ■ Other (7.81%)
 ■ White (58.43%)



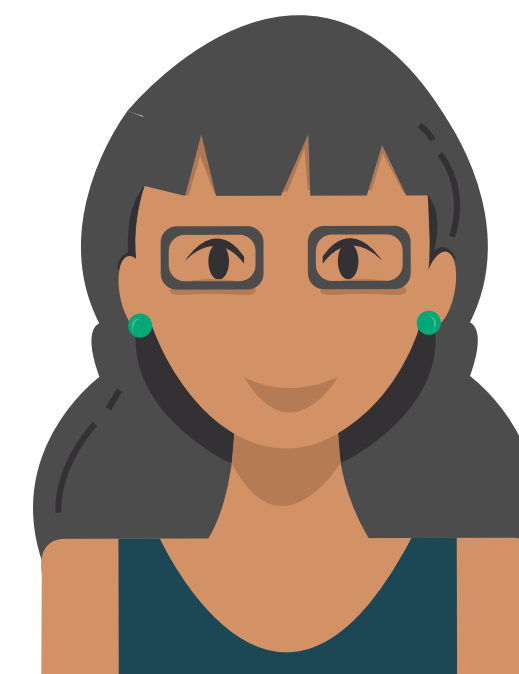
0-17
414,987
21.1%



18-39
546,825
27.8%



40-64
671,803
34.1%



65+
334,196
17.0%



■ Female (51.32%)
 ■ Male (48.68%)

30.2% Latinx

The Latinx population has experienced continuous growth over the past 10 years. The 3 countries representing the largest Latinx populations are Cuba, Puerto Rico and Colombia.



Cuba
125,534



Puerto Rico
99,104



Colombia
88,308

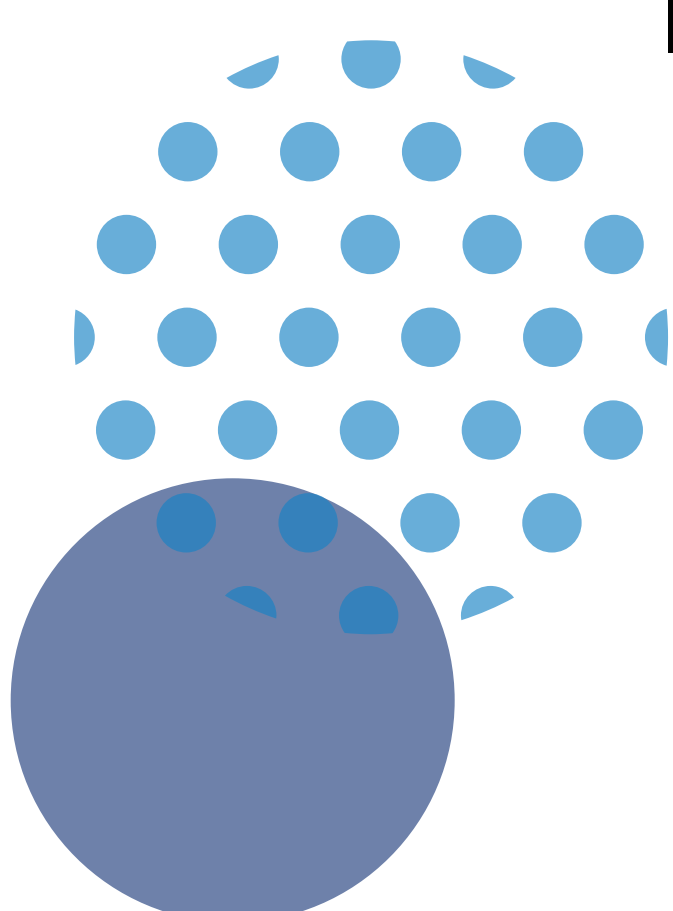
In addition to a large Latinx population, Broward County has many other diverse ethnic groups including large Jamaican and Haitian populations.



Jamaica
114,438



Haiti
135,352



Source: Claritas, 2019; American Community Survey, 2018



Economic Profile

Broward County and Florida have both experienced increases in per capita income and median household income while there have been decreases in people living below the poverty level. In addition, employment has experienced positive trends in recent years including increases in labor force, job growth and decreases in unemployment.

In regards to housing, it has been well established that Broward County has one of the worst housing markets in the state because of high costs. Fair Market Rent is \$1,387 for a 2-bedroom apartment which is slightly higher than the median gross rent. Furthermore, the difference between median house value and the median list price shows how it can be a financial burden for potential homebuyers.

Income

Per Capita Income, 2018

Median Household Income, 2018

People Below 100% FPL, 2018

Broward



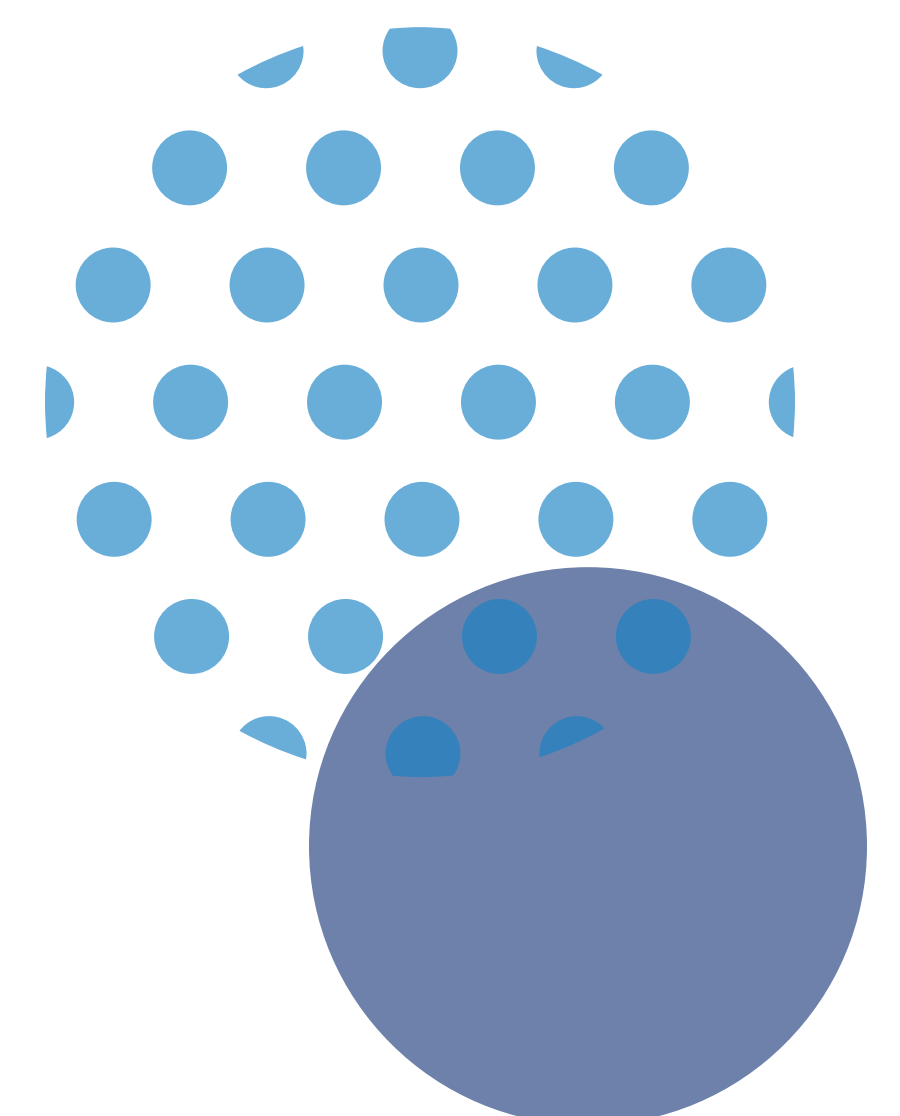
Florida

Employment

Broward



Florida



1,031,169

Labor Force

10,174,000

1.7%

Job Growth

1.60%

3.4%

Unemployment

3.6%

Housing



\$277,600

Median Value of Owner-Occupied Housing

\$230,600

\$315,000

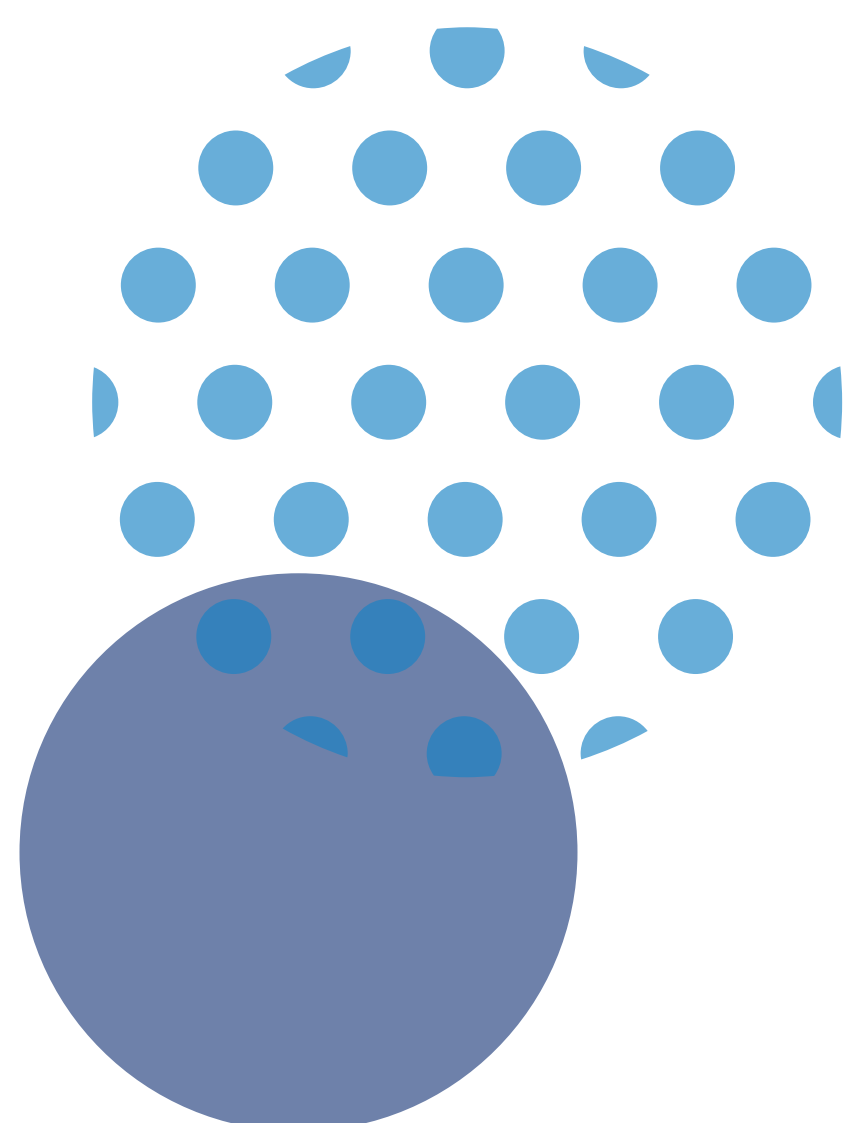
Median List Price

\$259,000

\$1,372

Median Monthly Gross Rent

\$1,182





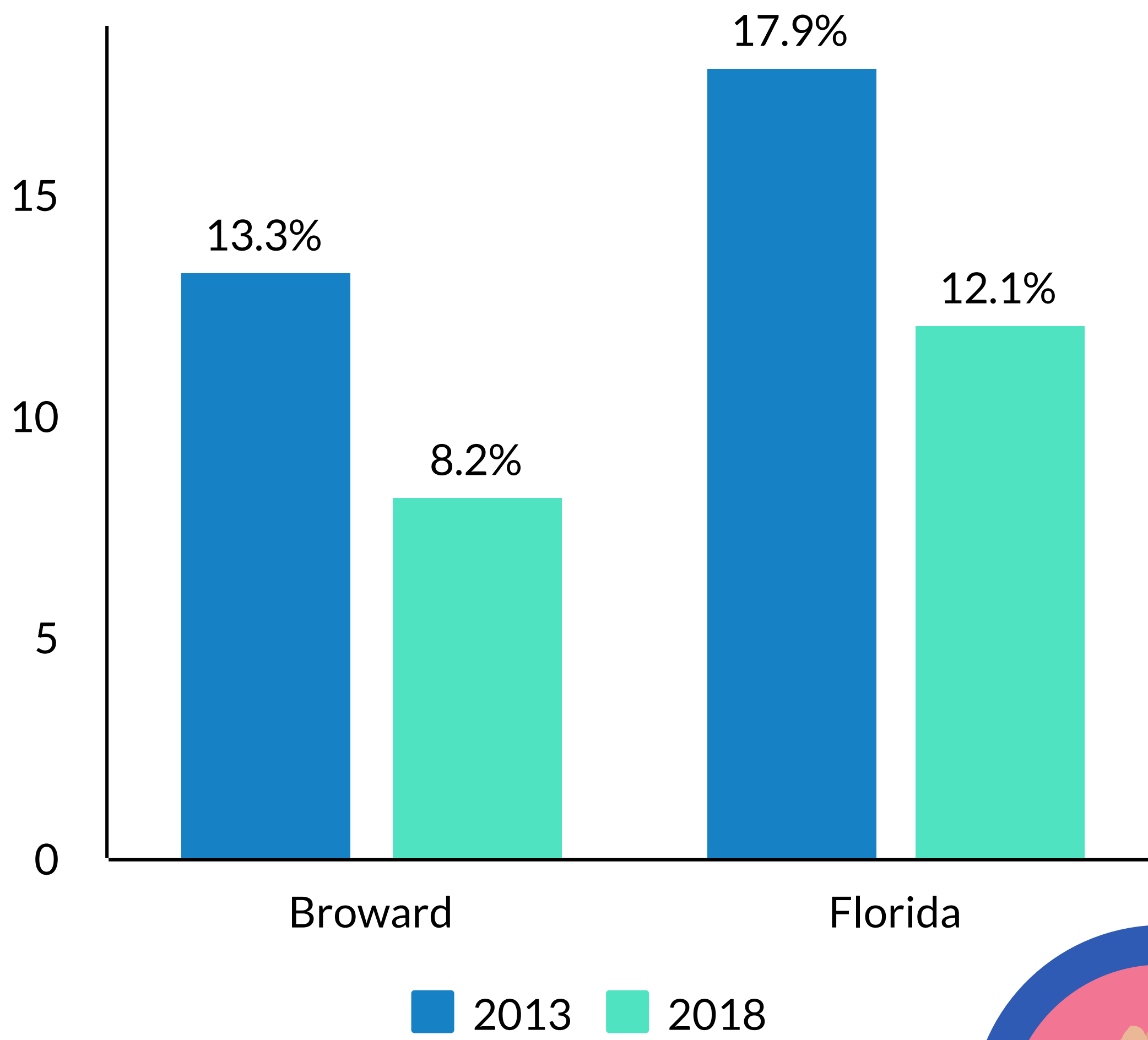
Maternal and Child Health Profile

Live Births

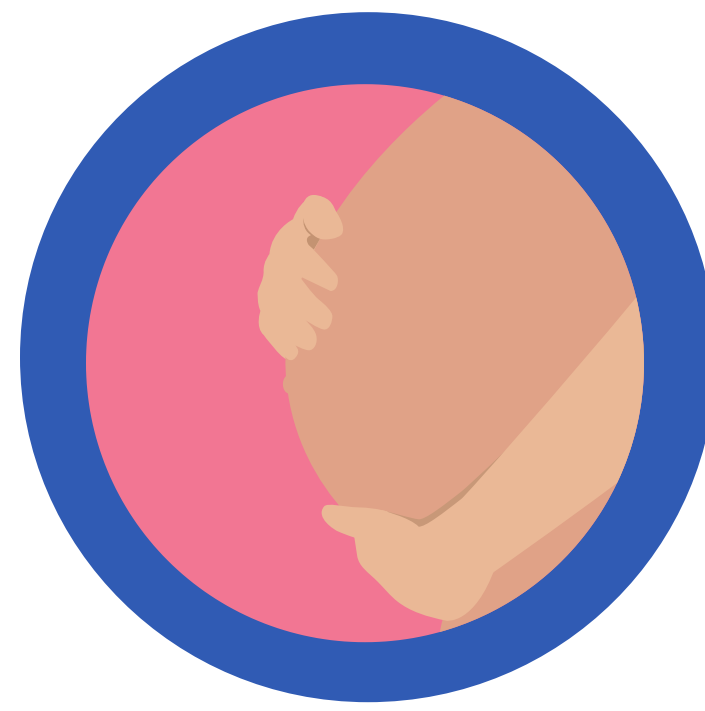
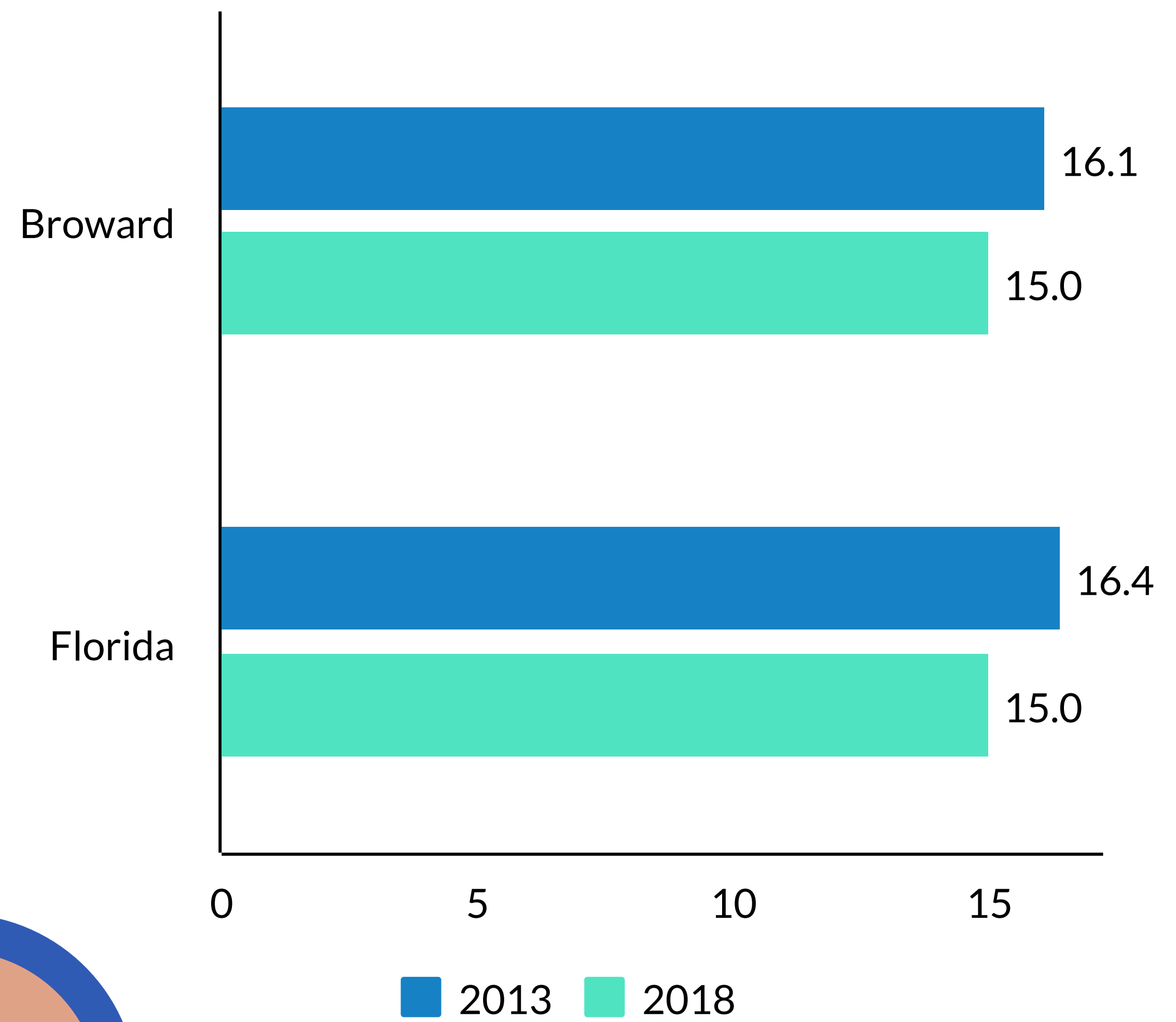
21,922

Teen births and repeat births to teens have had significant decreases from 2013 to 2018. Despite these successes, both Broward and Florida have had increases in mothers who wait to begin prenatal care or no care at all. These trends may be related to recent political climate and the fear that many immigrant women may have due to a lack of citizenship and not being well informed about community options that are available to them regardless of status.

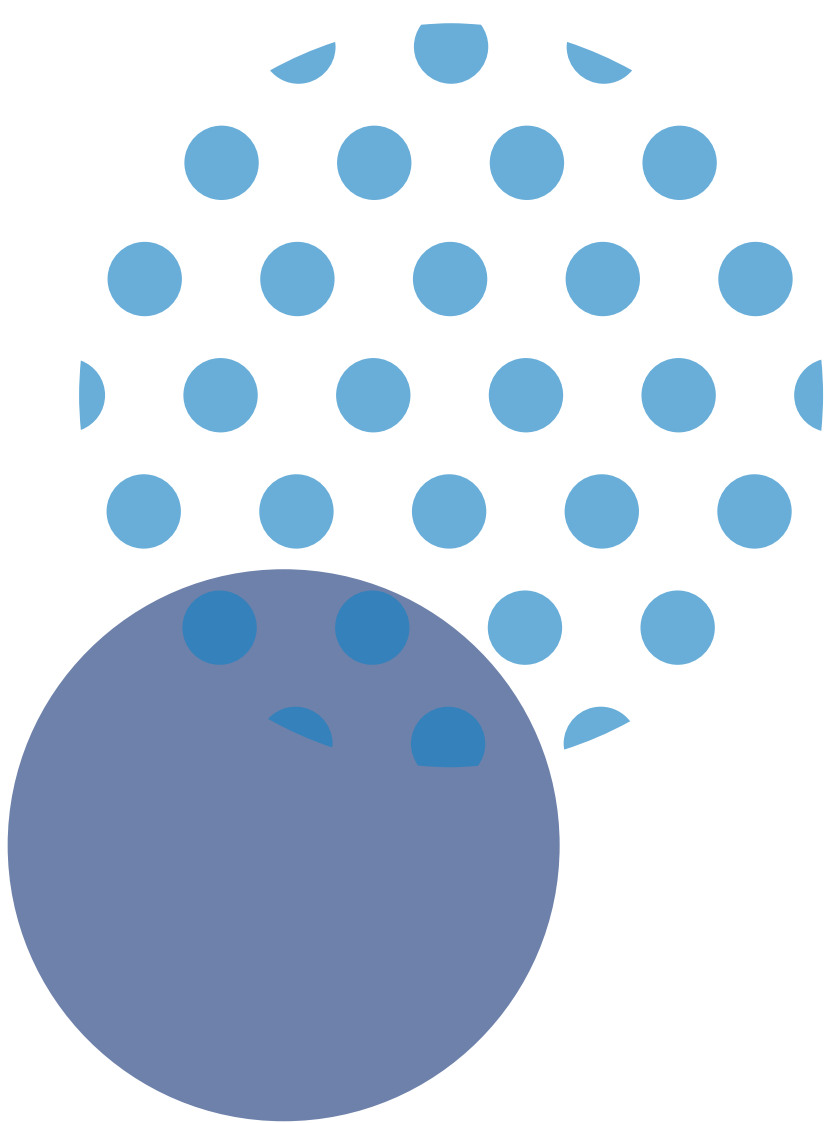
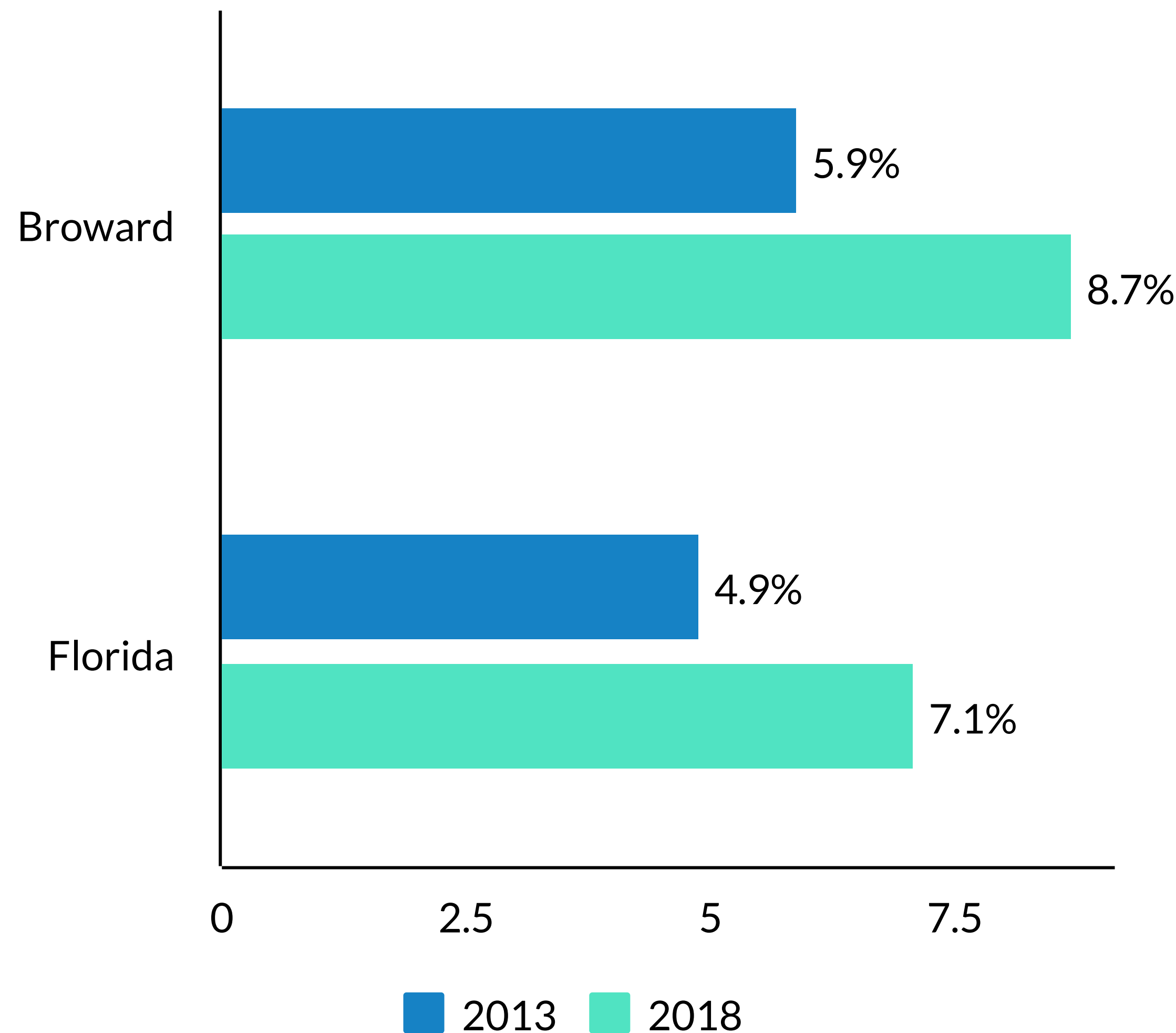
Teen Births
(13-19 years old)



Repeat Teen Births
(15-19 years old)



Entry into Prenatal Care in Third Trimester or No Prenatal Care



Source: Florida Charts, 2018

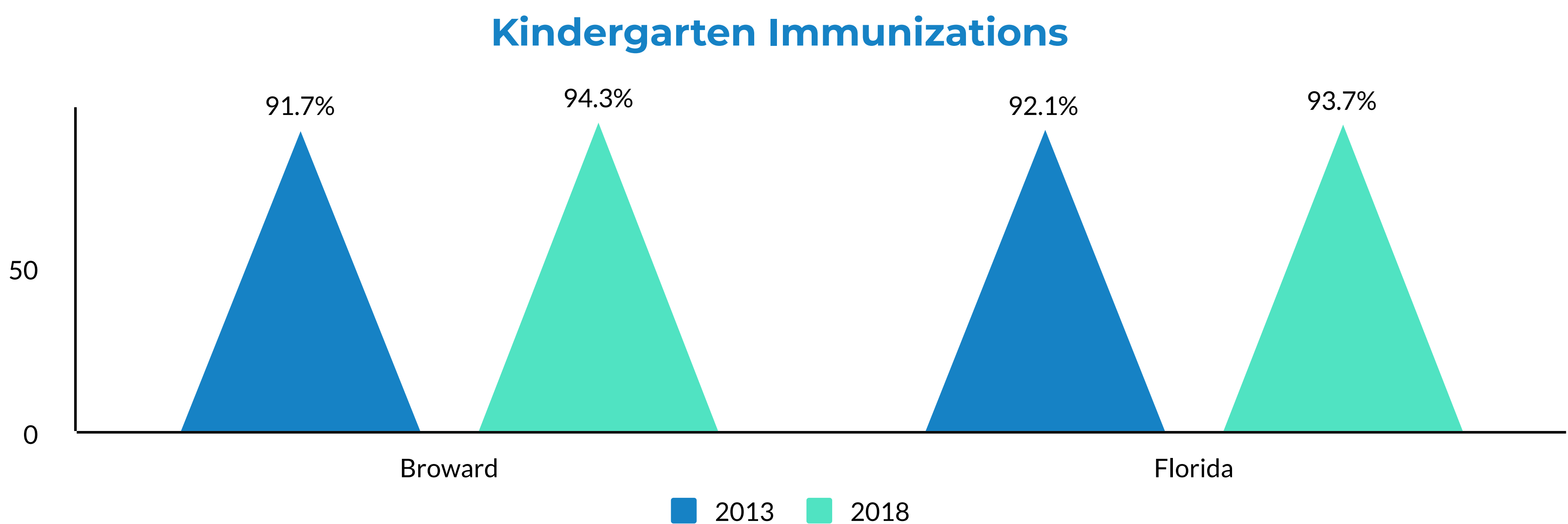
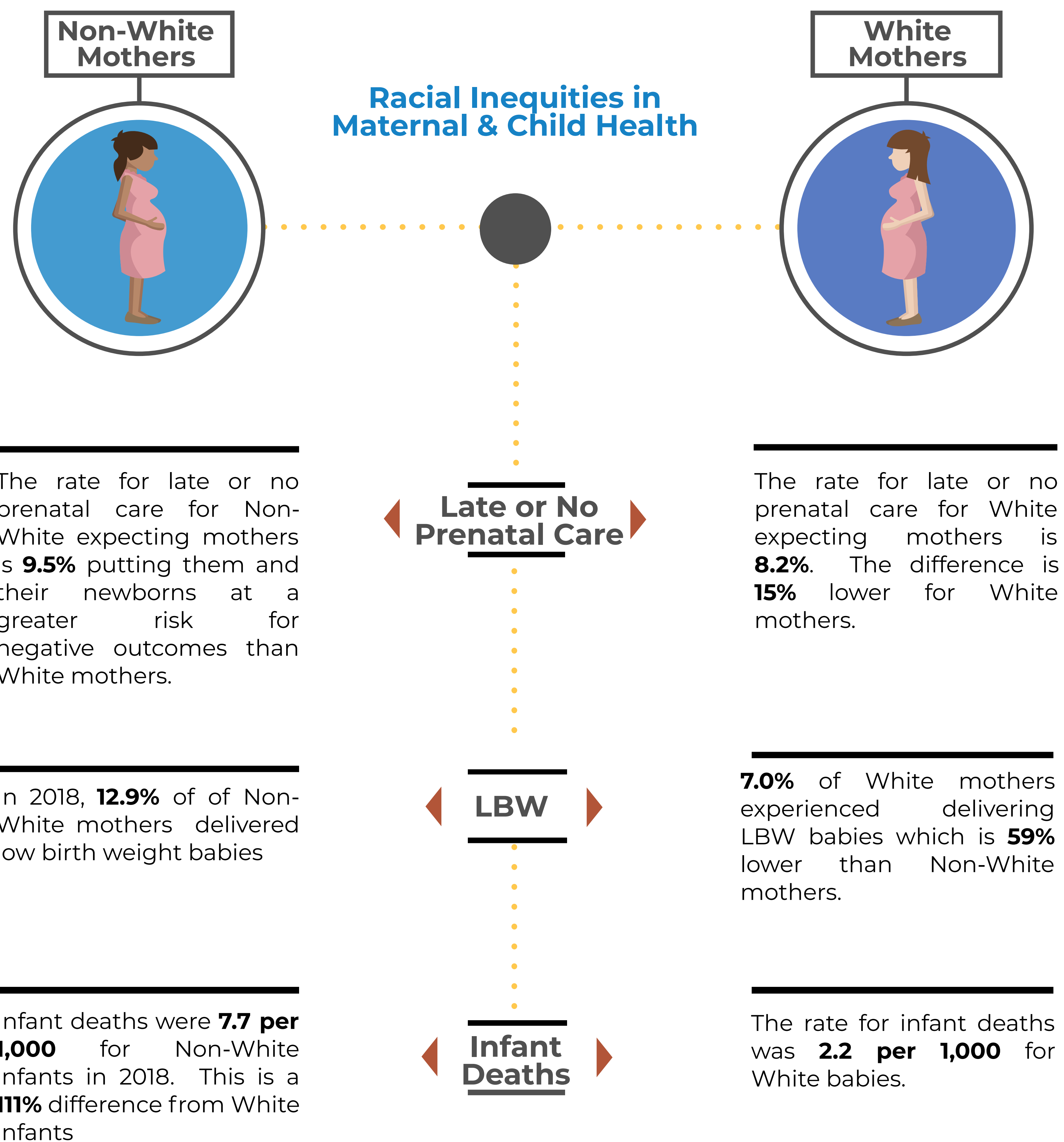


Maternal and Child Health Profile

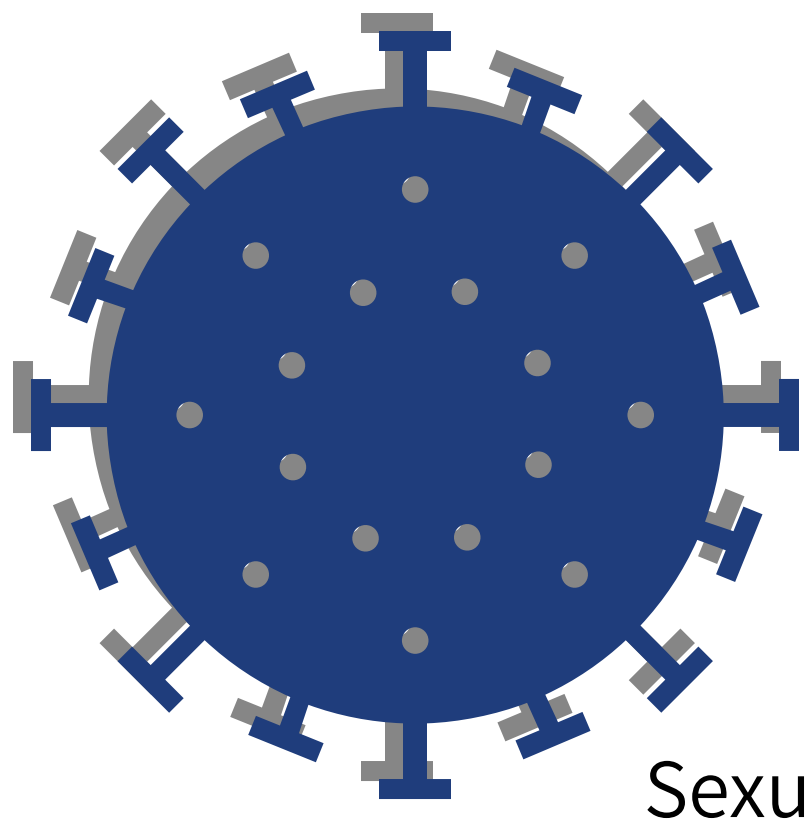
There are many negative consequences that come from late or no prenatal care including low birth weight (LBW), infant deaths and maternal deaths.

From 2013 to 2018 there was an increase in LBW babies in Broward and Florida (9.4% to 9.6% and 8.5% to 8.7% respectively). During the same time period infant deaths decreased in both Broward and Florida (5.3 to 4.7 and 6.1 to 6.0 respectively). Finally, maternal deaths have decreased going from 8 to 4 in Broward County over 5 years and 64 to 40 in the State.

Beyond the general statistics, it is important to highlight the inequities seen in trends between different racial/ethnic groups. Below are statistics that support the fact that more needs to be done to close these gaps.



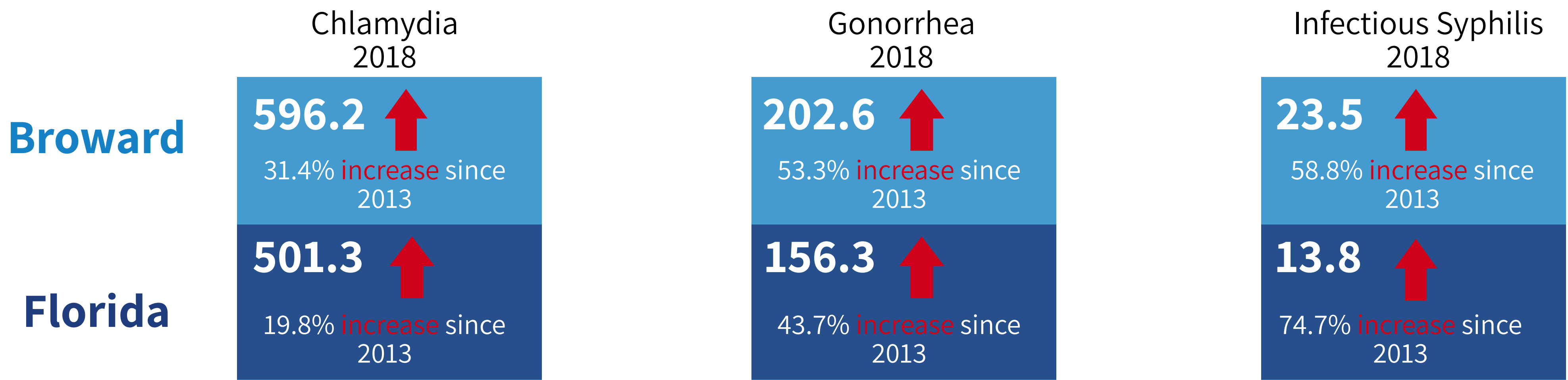
Source: Florida Charts, 2018



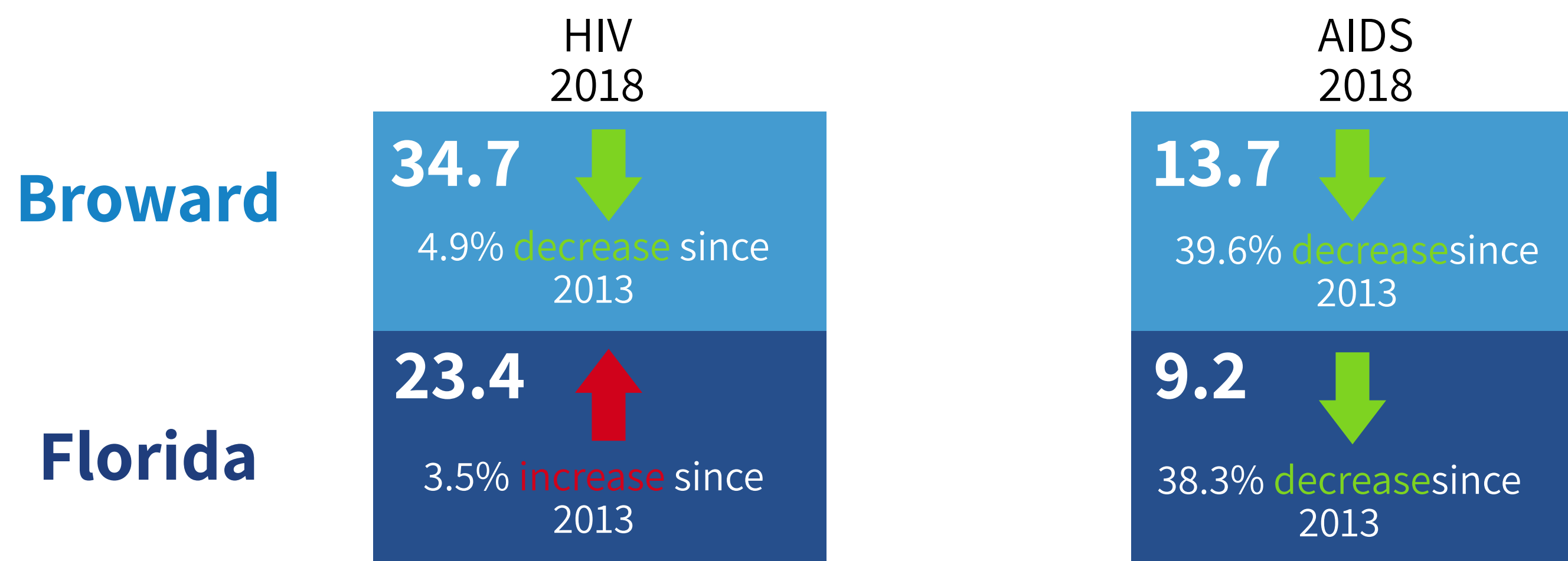
Communicable Disease Profile

Sexually Transmitted Infections (rate per 100,000 population)

Sexually transmitted infections (STIs) continue to be a major issue in Broward County. The three primary STIs have had significant increases from 2013 to 2018 in both Broward and Florida. In regards to rates, Broward's ranks as follows: Chlamydia (#9), Infectious Syphilis (#4), and Gonorrhea (#11).



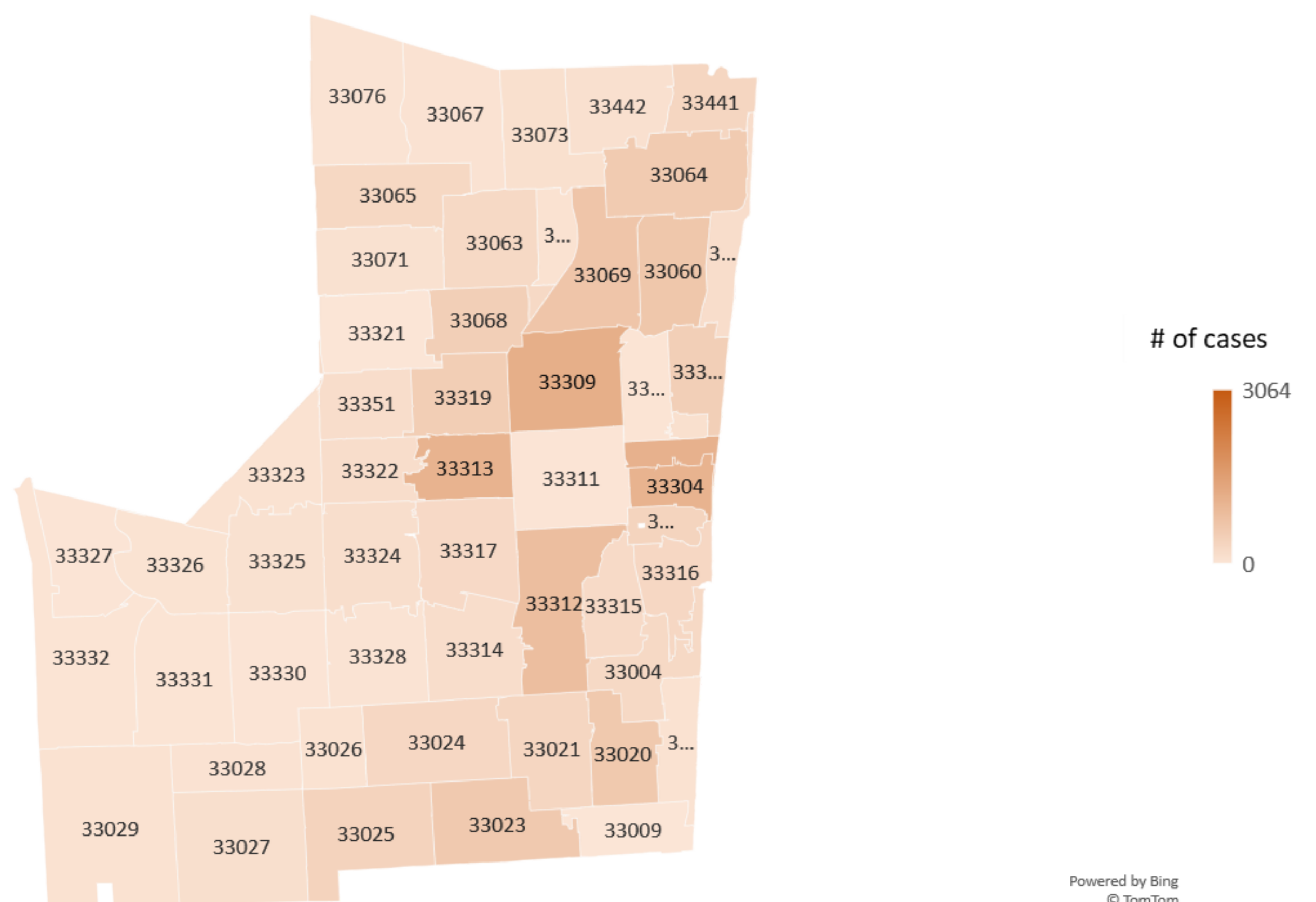
Broward County has been known to have one of the highest rates of HIV in the United States; however, it is important to note that there have been decreases in both HIV and AIDS infections in Broward County over the past 5 years. Some contributing factors are better education, more options to prevent the spread of infection from mother to baby via early prenatal intervention and prevention between partners by using Prep medication. Furthermore, there have been a number of campaigns targeted at diminishing the stigma of being positive for HIV/AIDS leading to more individuals being tested leading to decreases in the advancement of the disease amongst individuals who may not have been tested in the past.



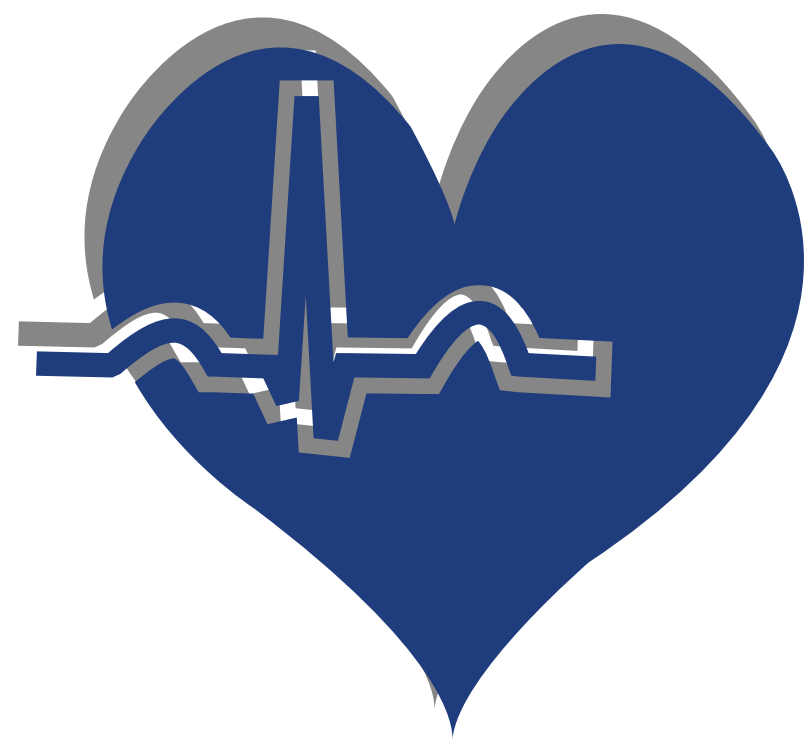
Adults Living with HIV, 2018

Zip Codes with the Highest Number of Cases

- 33311
- 33334
- 33309
- 33305
- 33304
- 33313
- 33312
- 33069
- 33060
- 33020



Powered by Bing
© TomTom

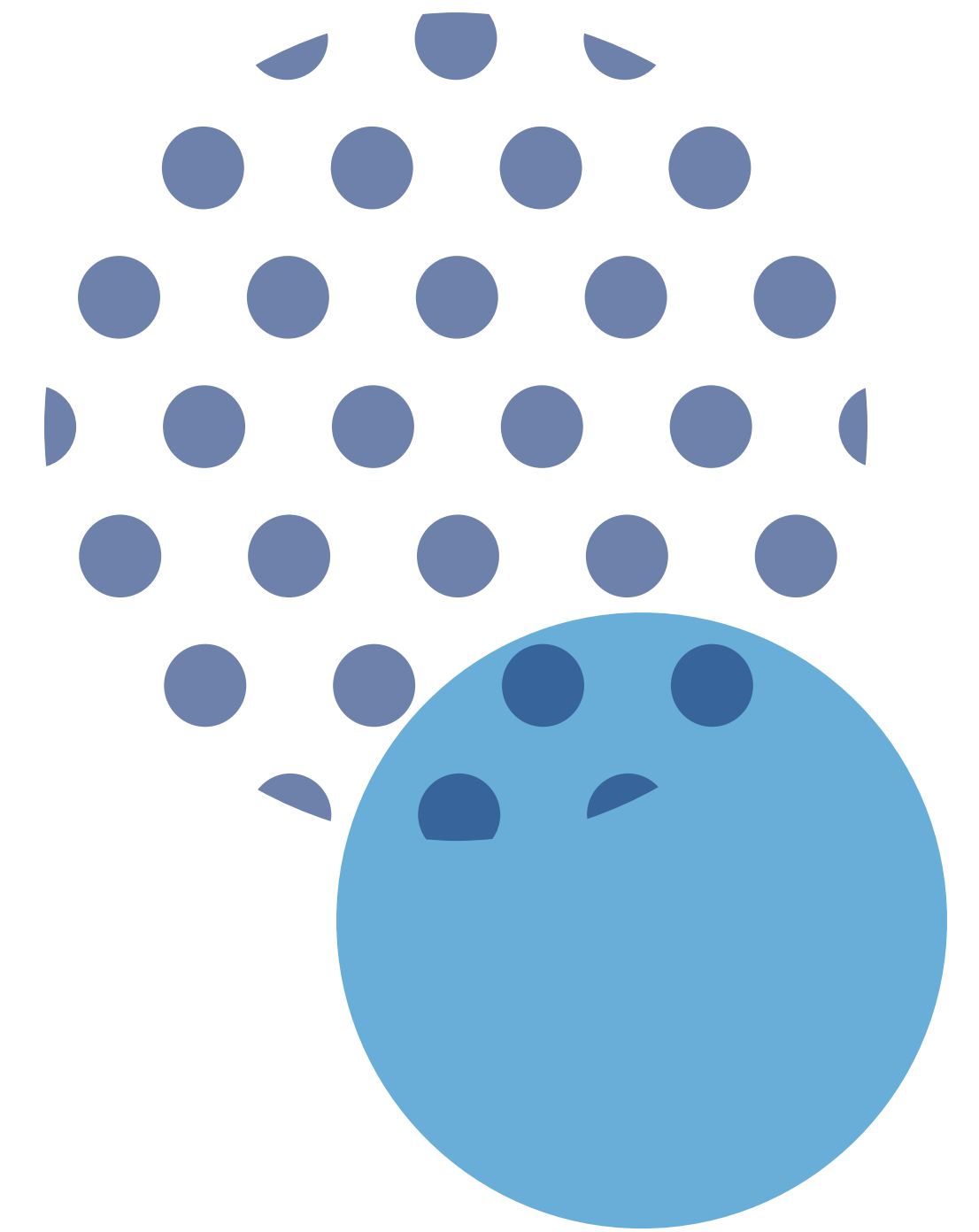


Chronic Disease Profile

Top 5 Causes of Death
Broward County, 2018



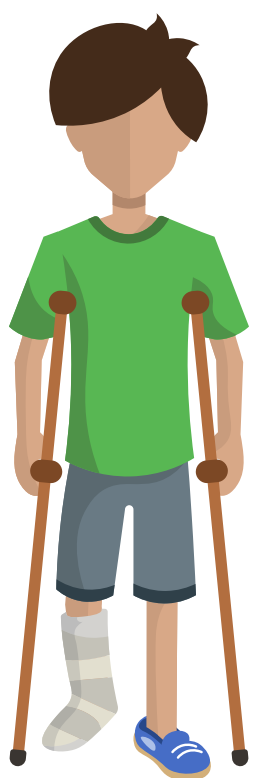
Heart Disease
23.7 per 100,000



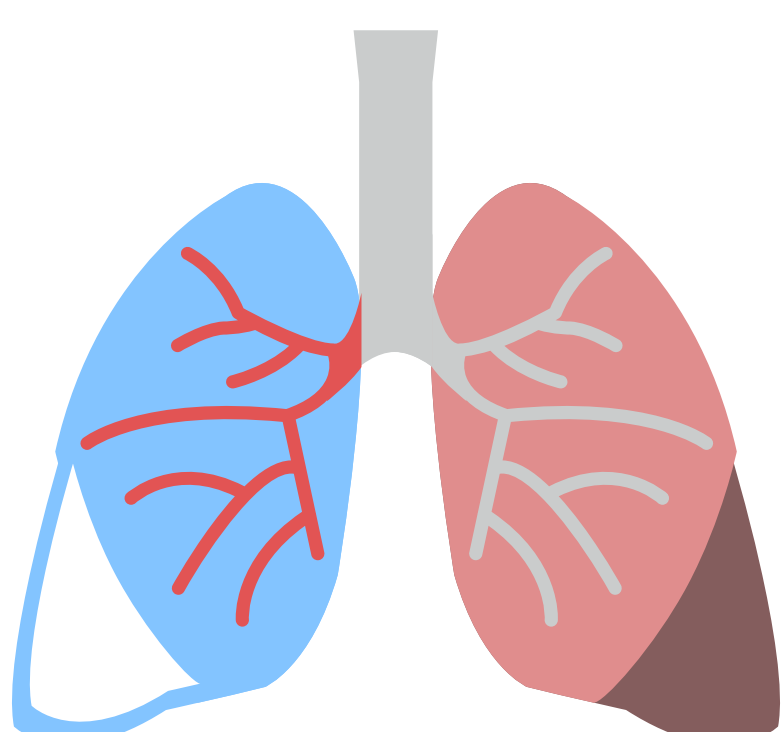
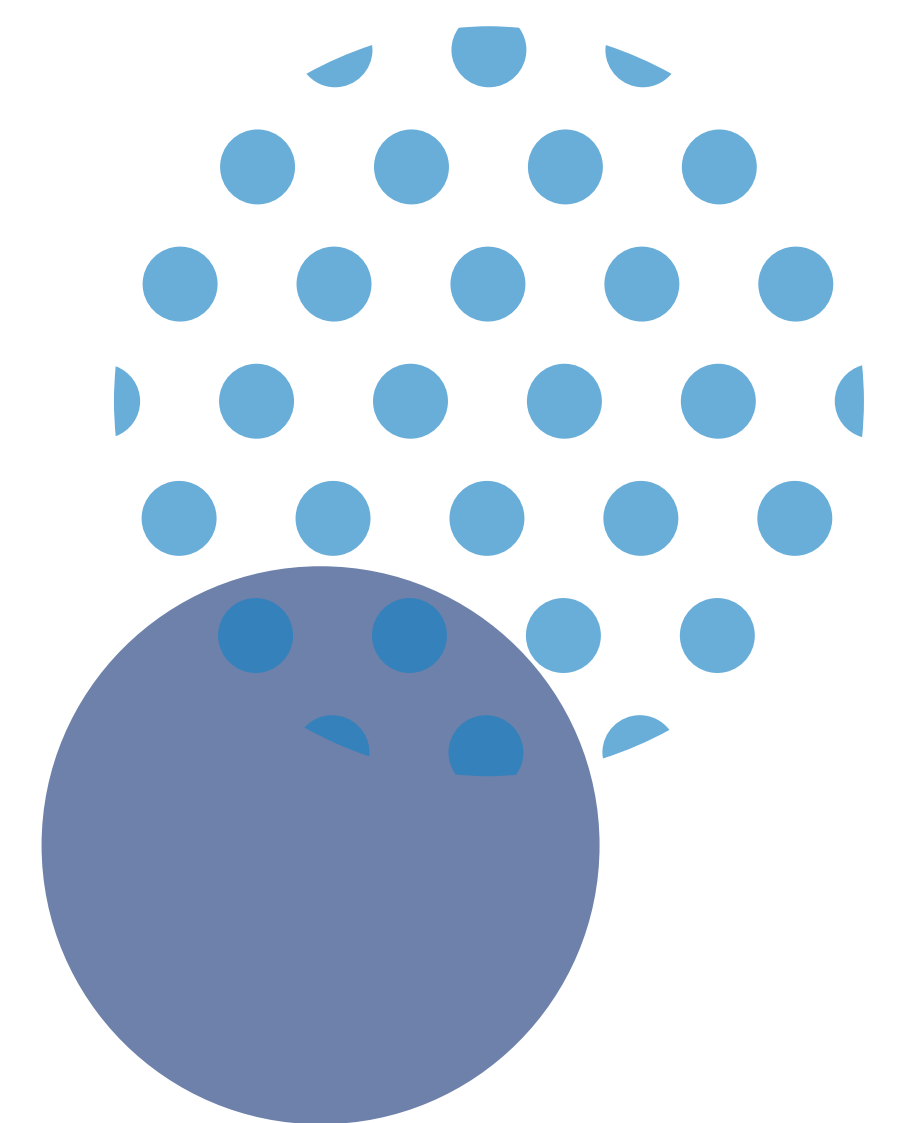
Cancer
23.1 per 100,000



Stroke
10.7 per 100,000



Unintentional Injury
6.1 per 100,000

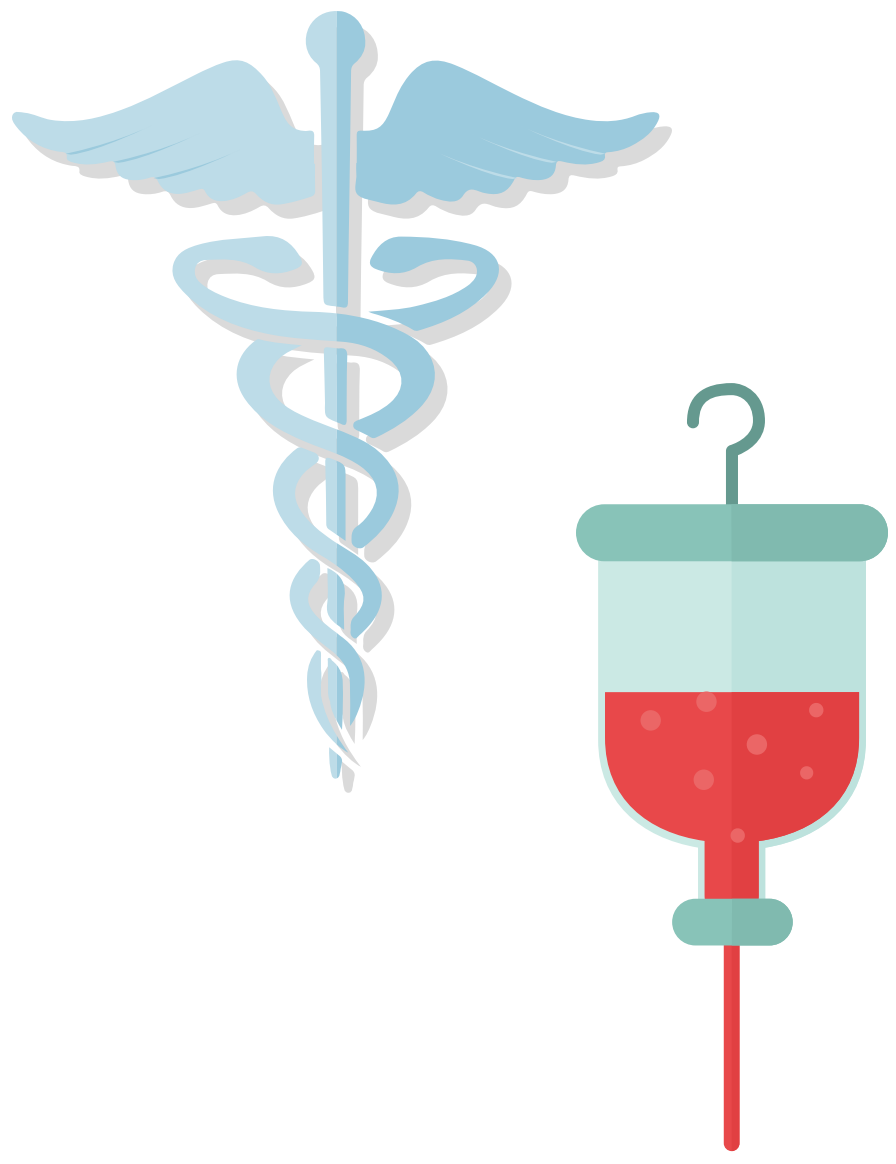


Chronic Lower Respiratory Disease
5.6 per 100,000

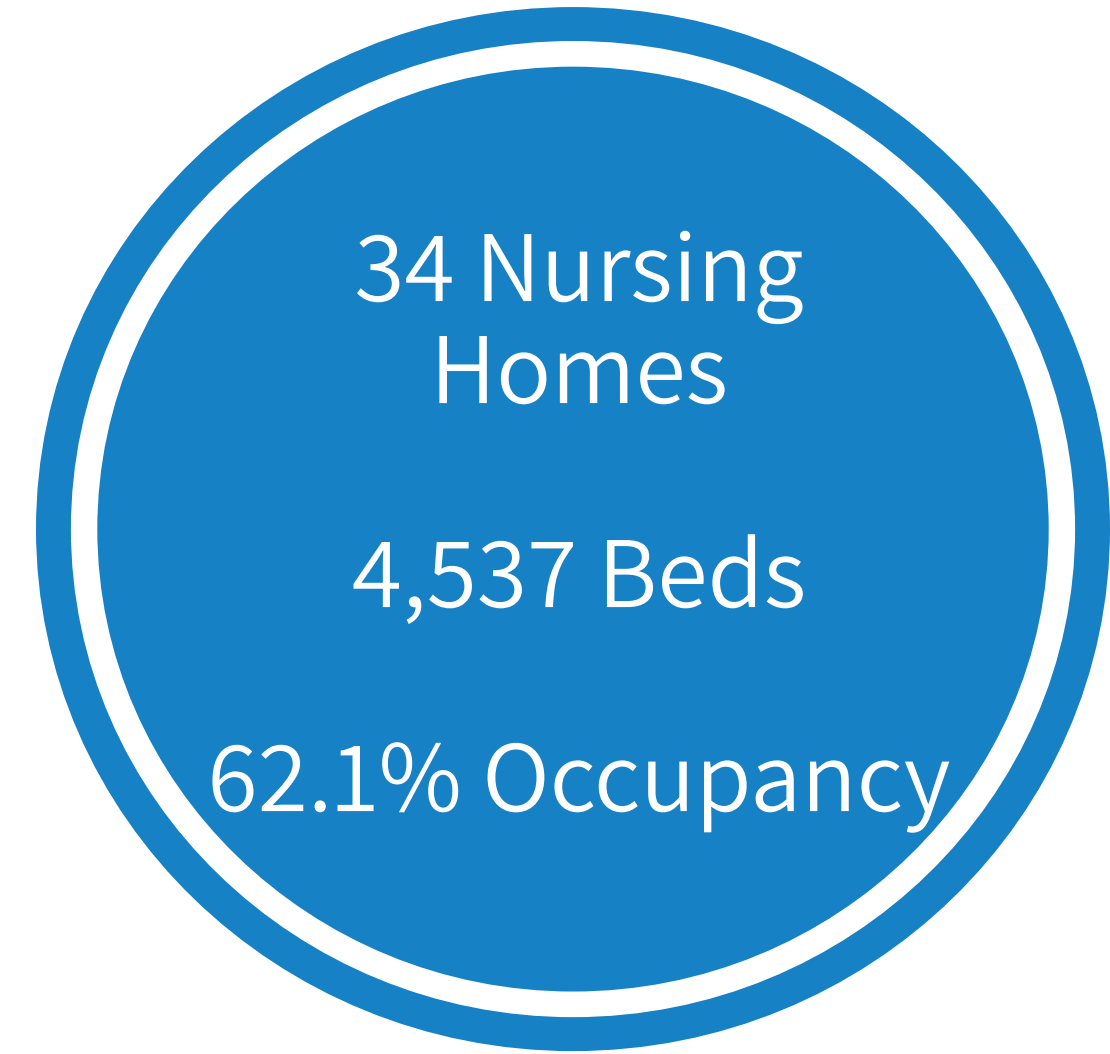


Medical Facility Utilization Profile

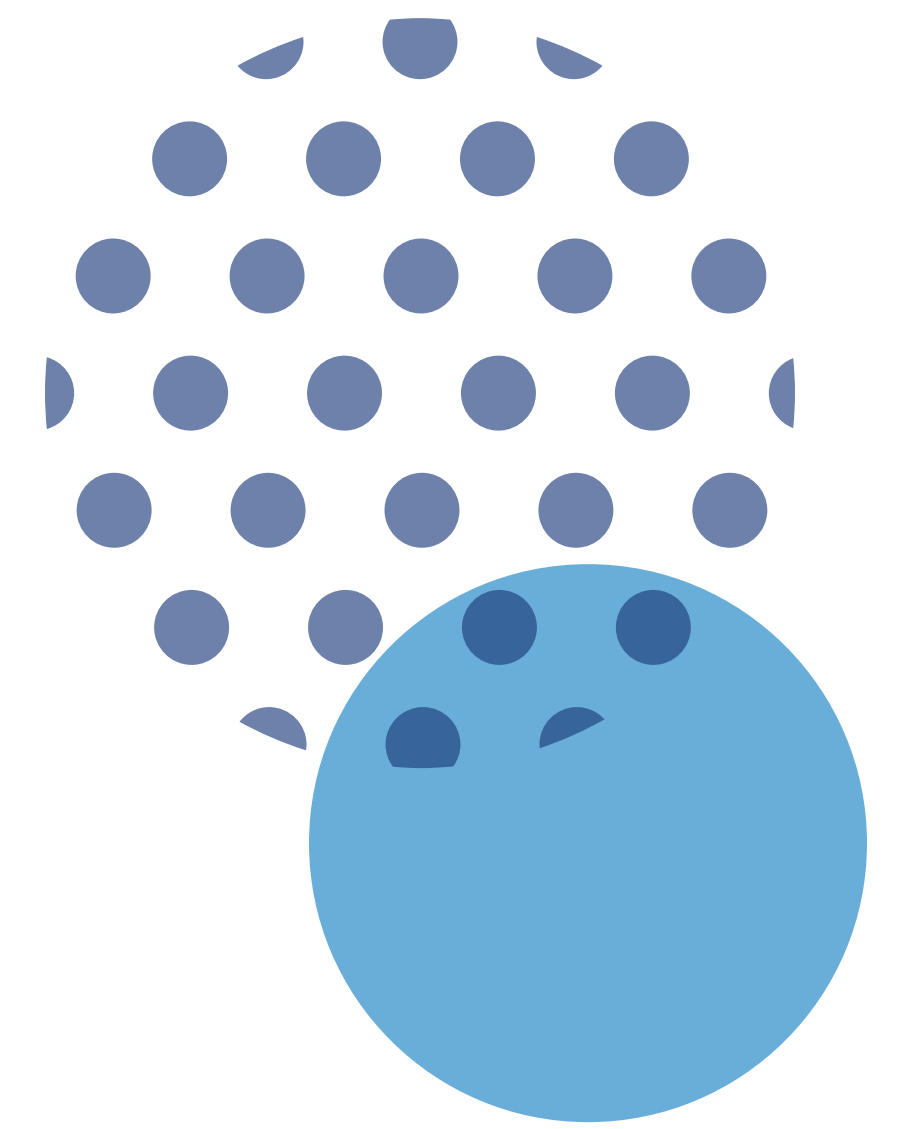
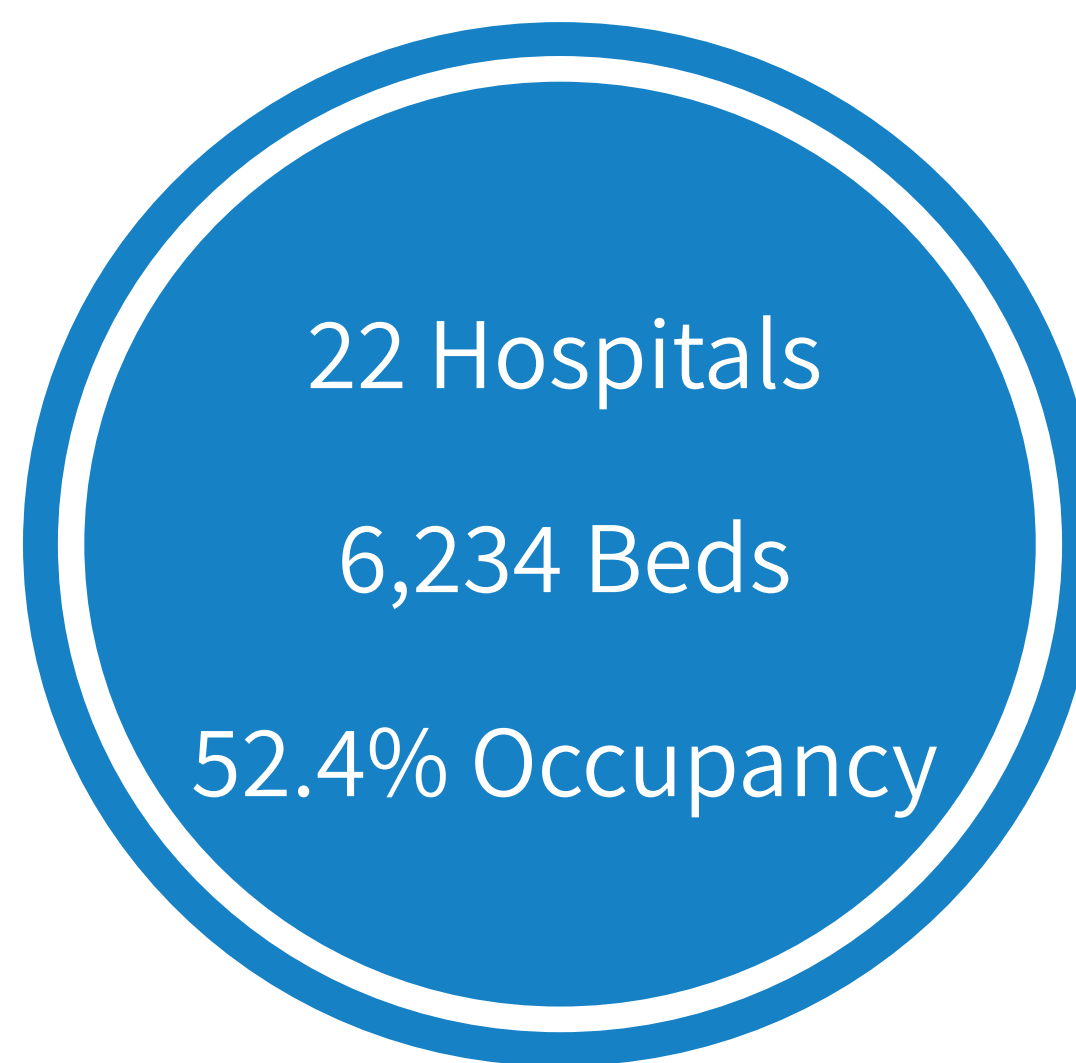
Medical Facility Beds and Occupancy Rates



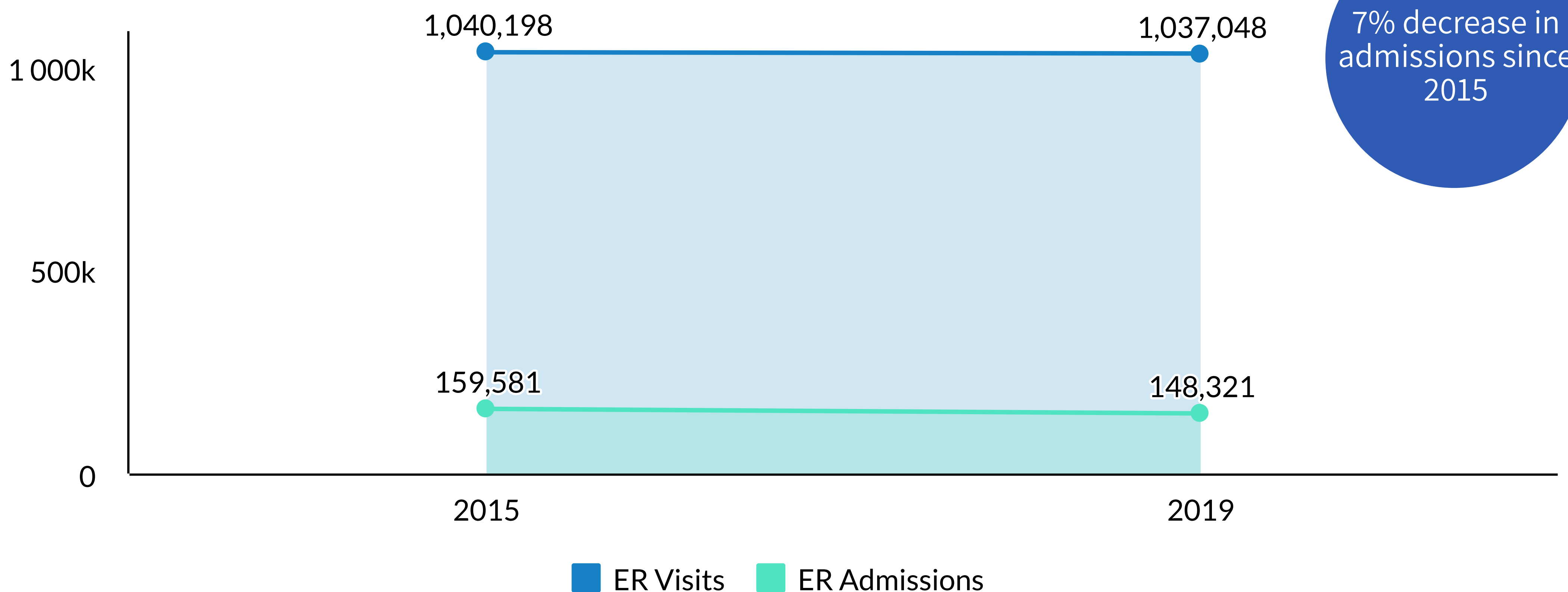
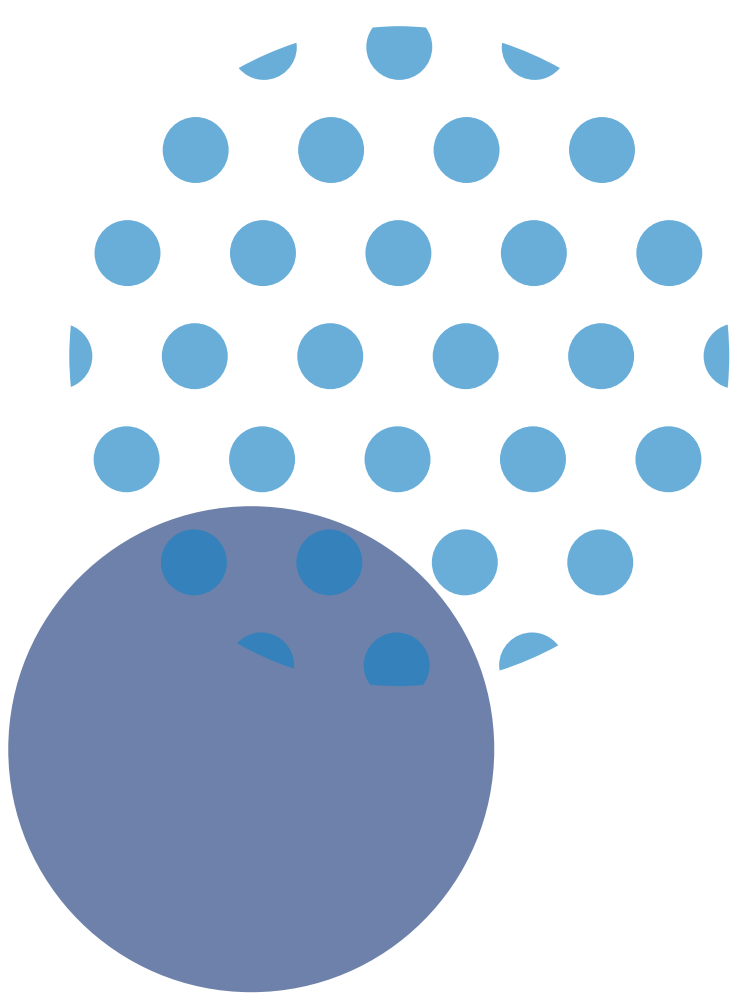
Nursing Homes



Hospitals



Emergency Room Visits and Admissions



Source: BRHPC Data Warehouse, 2019



Educational and Social Profile

Education 2018/19 School Year



Educational Attainment

32.3% of Broward residents have B.S. or higher

Graduation Rate
86.2%

Dropout Cohort
1.8%

School Enrollment

267,970 students

Total Homeless

2,803

Unsheltered
people living in places not meant for human habitation

Sheltered
people in emergency shelter, transitional shelter or safe haven

Unsheltered
1,350

Sheltered
1,066

Homelessness, 2019



Youth Arrests

3,377

Crime Rate
2,987.4 per 100,000

Arrest Rate
2,608.4 per 100,000

Crime, 2019



There are racial disparities when looking at arrests for both adults and youth. In 2019, there were 23,778 arrests of White individuals compared to 25,630 Black individuals. When looking at youth arrests there is an even larger discrepancy with 431 White arrested youth compared to 2,358 Black arrested youth.