

2015 BROWARD COUNTY HEALTH PROFILE



Broward Regional Health Planning Council, Inc. is committed to delivering health and human service innovations at the national, state, and local level through planning, direct services, evaluation, and organizational capacity building.

www.brhpc.org

About the . . .

Broward County Health Profile

Broward Regional Health Planning Council's *Broward County Health Profile* provides a synopsis of Broward County health indicators. It is a compilation of statistics at the county and state levels; including population demographics, socioeconomic factors, leading causes of death, infectious diseases, maternal and child health, healthcare utilization, healthcare access and prevention quality indicators.

Broward Regional Health Planning Council



Broward Regional Health Planning Council, Inc. Board of Directors

Barbara S. Effman, MPH

Chair

John A. Benz, MBA

Secretary

Mark Dissette, MBA

Lee Chaykin, MHSA

Albert C. Jones, MA

Daniel Lewis

David Roach, BA

Vice Chair

Cyril Blavo, D.O.

Treasurer

Jasmin Shirley, MSPH

Leilani Kicklighter, MBA, ARM, RN

Samuel F. Morrison, BA, MLS

Cary Zinkin, DPM

Michael De Lucca, *President and CEO*

For more information, contact:

Regine Kanzki, MPH

Division Director

rkanzki@brhpc.org

200 Oakwood Lane, Suite 100

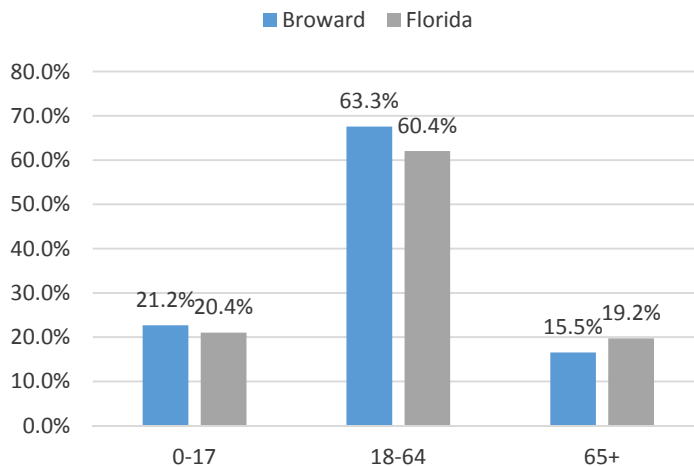
Hollywood, FL 33020

(954) 561 - 9681

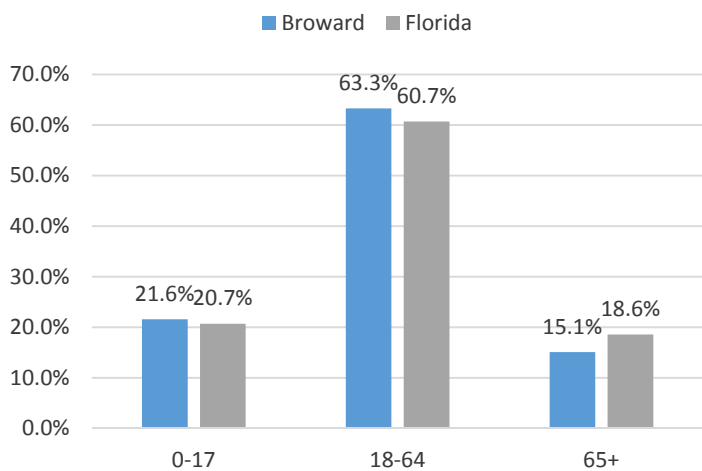
POPULATION DEMOGRAPHICS

2015	Broward		Florida	
	Number	Percent	Number	Percent
Total Pop	1,866,667	-	19,897,507	-
Male	906,951	48.6%	9,612,303	48.3%
Female	959,716	51.4%	10,032,012	50.4%
0-17	396,550	21.2%	4,068,139	20.4%
18-64	1,180,953	63.3%	12,013,275	60.4%
65+	289,136	15.5%	3,815,605	19.2%
White	1,141,082	61.1%	14,686,409	73.8%
Black	516,881	27.7%	3,240,769	16.3%
Hispanic	524,881	28.1%	4,776,912	24.0%
Asian	66,431	3.6%	545,904	2.7%
Other	136,360	7.3%	1,343,722	6.8%

Age Distribution, 2015



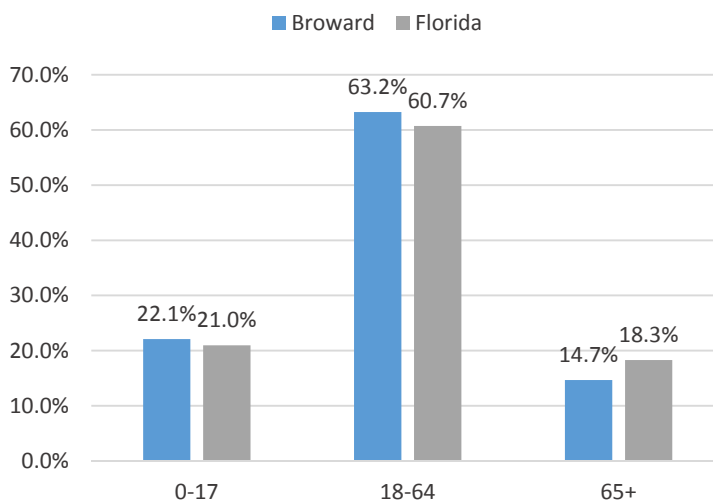
Age Distribution, 2014



2014	Broward		Florida	
	Number	Percent	Number	Percent
Total Pop	1,842,008	-	19,654,457	-
Male	894,765	48.6%	9,617,443	48.9%
Female	947,243	51.4%	10,037,014	51.1%
0-17	397,242	21.6%	4,064,520	20.7%
18-64	1,165,698	63.3%	11,924,718	60.7%
65+	279,037	15.1%	3,664,758	18.6%
White	1,148,535	62.4%	14,567,604	74.1%
Black	489,441	26.6%	3,177,992	16.2%
Hispanic	505,265	27.4%	4,644,294	23.6%
Asian	64,435	3.5%	527,142	2.7%
Other	133,620	7.3%	1,301,783	6.6%

2013	Broward		Florida	
	Number	Percent	Number	Percent
Total Pop	1,747,730	-	19,356,053	-
Male	847,446	48.5%	9,460,200	48.9%
Female	900,284	51.5%	9,895,853	51.1%
0-17	386,072	22.1%	4,058,168	21.0%
18-64	1,105,345	63.2%	11,753,895	60.7%
65+	256,313	14.7%	3,543,990	18.3%
White	1,062,201	60.8%	14,342,590	74.1%
Black	481,558	27.6%	3,156,578	16.3%
Hispanic	497,629	28.5%	4,661,895	24.1%
Asian	62,814	3.6%	503,139	2.6%
Other	72,075	4%	760,516	3.9%

Age Distribution, 2013



Source: Nielsen Population Data, 2013 - 2015

ADDITIONAL POPULATION DEMOGRAPHICS

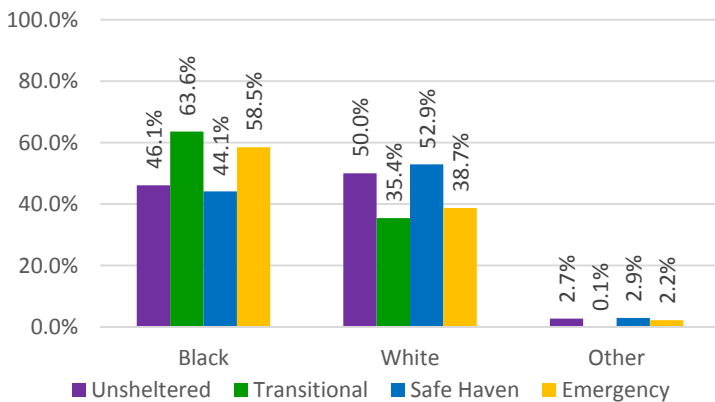
Broward Detention Facilities' Avg. Daily Population	December 2015		December 2014		December 2013	
	Number	Rate per 1,000	Number	Rate per 1,000	Number	Rate per 1,000
	4,600	2.5	4,269	2.4	4,305	2.4

Source: Florida Department of Corrections - Florida County Detention Facilities' Average Inmate Population 2015 Monthly Reports, <http://www.dc.state.fl.us>

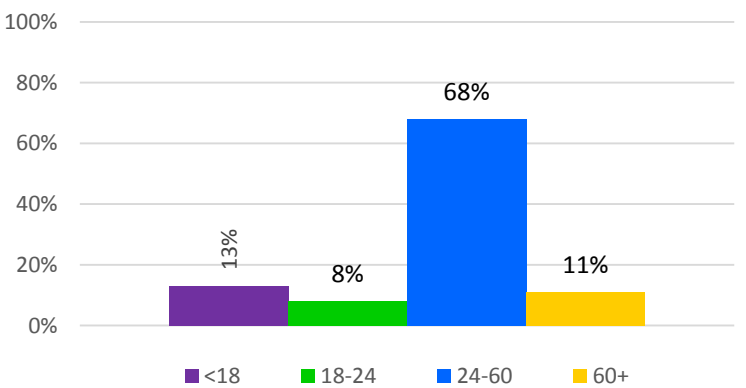
There was an increase in the total number of detainees in 2015 by over 95 individuals.

Broward County Homelessness	2016	2015	2014	2013
Unsheltered	782	819	879	829
Sheltered	1,520	1,795	1,887	1,981
Total	2,302	2,614	2,766	2,810

2016 PIT Count by Race



2016 PIT Count by Age



Source: 2016 Broward County Point-In-Time Homeless Count <http://www.browardpointintime.org/>

In comparison to the general Broward County population, the Black population is overrepresented among the homeless. Individuals between the ages of 24 and 60 experience homelessness at a higher percentage than any other age groups.

Number of Medicaid Eligible	Broward		Florida	
	March 2015	March 2016	March 2015	March 2016
	326,854	345,376	3,863,265	4,009,952

Source: Agency for Health Care Administration, <http://www.fdhc.state.fl.us/>

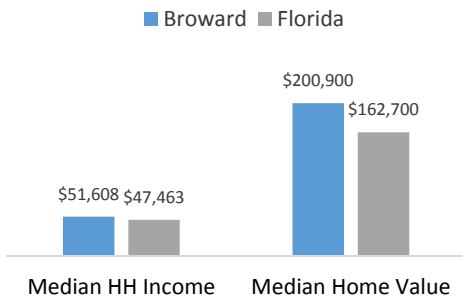
Broward County saw 5.4% increase in the number of individuals eligible for Medicaid.

SOCIECONOMIC FACTORS

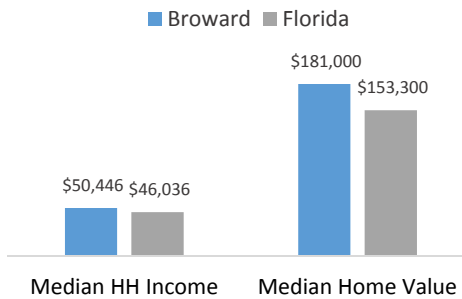
Income	Broward					Florida				
	2014		2013		2012	2014		2013		2012
		Change		Change			Change		Change	
Per Capita	\$27,820	0.1%	\$27,804	3.2%	\$26,932	\$26,582	2.9%	\$25,834	1.6%	\$25,428
Median Household Income	\$51,608	2.3%	\$50,446	1.3%	\$49,793	\$47,463	3.1%	\$46,036	2.2%	\$45,040
Median Home Value	\$200,900	11.0%	\$181,000	9.3%	\$165,600	\$162,700	6.1%	\$153,300	3.4%	\$148,200

Source: U.S. Census Bureau, American Community Survey (2012, 2013, 2014)

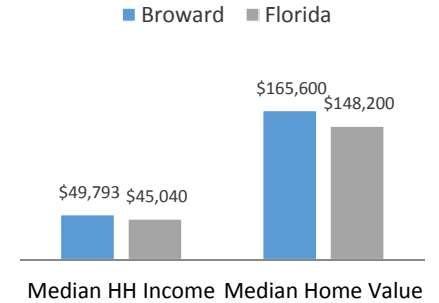
Income Indicators, 2014



Income Indicators, 2013



Income Indicators, 2012



Education	Broward			Florida		
	2014/15	2013/14	2012/13	2014/15	2013/14	2012/13
Student Enrollment	266,265	262,663	262,226	2,756,944	2,720,797	2,692,162
Student Dropout rate	1.4%	1.9%	2.1%	1.8%	1.9%	2.0%
High School Graduation Rate	76.6%	74.2%	75.3%	77.8%	76.1%	75.6%

Source: Florida Department of Education (FDOE)

Employment & Unemployment	Broward				Florida			
	2015	2014	2013	2012	2015	2014	2013	2012
Labor Force	992,392	994,081	1,033,081	1,015,805	9,675,000	9,638,000	9,432,000	9,369,000
Employment	942,412	936,010	970,449	940,417	9,153,000	9,034,000	8,750,000	8,562,000
Unemployment	49,980	58,071	62,632	75,388	522,000	603,000	683,000	807,000
Unemployment Rate	5.0%	5.8%	6.1%	7.4%	5.4%	6.3%	7.2%	8.6%

Source: Florida Department of Economic Opportunity

Poverty ≤ 100% FPL	Broward			Florida		
	2014	2013	2012	2014	2013	2012
Persons < 100% FPL	14.6%	14.3%	13.5%	16.5%	17.0%	15.6%
Families below FPL	11.4%	10.9%	10.1%	12.0%	12.4%	11.4%
Families w/ female householder, no husband present	23.8%	22.5%	21.3%	43.3%	29.1%	27.9%
Children < 18 years	19.7%	18.9%	18.0%	29.4%	24.5%	22.5%
Persons 18-64 years	13.4%	13.0%	12.2%	15.9%	16.4%	14.8%
Persons 65+ years	12.7%	12.7%	12.5%	10.5%	10.7%	10.1%

Source: U.S. Census Bureau, American Community Survey (2014, 2013, 2012)

LEADING CAUSES OF DEATH (Age Adjusted)

Count & Rate/ 100,000	2014				2013				2012			
	Broward		Florida		Broward		Florida		Broward		Florida	
	Count	Rate	Count	Rate	Count	Rate	Count	Rate	Count	Rate	Count	Rate
All Causes	14,344	608.7	185,038	638.5	14,144	615.9	180,014	679.3	14,299	642.9	175,849	680.7
Heart Disease	3,687	147.5	43,747	219.9	3,664	151.6	42,249	153.4	3,561	153.4	41,643	155.3
Cancer	3,391	148.3	42,330	212.8	3,381	150.8	42,350	158.7	3,405	158.1	41,696	160.3
Stroke	1,114	44.2	9,605	48.3	769	32.8	8,611	31.3	755	32.5	8,372	31.2
Unint. Injury	636	32.4	9,128	45.9	584	29.8	8,534	38.8	657	33.7	8,561	39.7

Source: Florida Charts, <http://www.floridacharts.com>

INFECTIOUS DISEASES

Rate per 100,000	2014		2013		2012	
	Broward	Florida	Broward	Florida	Broward	Florida
HIV	38.6	23.6	52.6	28.3	50.3	28.3
AIDS	17.9	12.1	26.9	16.4	21.5	14.6
Chlamydia	496.6	425.3	455.8	419.1	422.5	408.8
Gonorrhea	142	105.4	133.1	109.1	124.1	102.7
Syphilis	17.8	8.8	14.9	7.9	16.2	7.2
Tuberculosis	3.1	3.0	4.0	3.6	3.7	3.6

Source: Florida Charts, <http://www.floridacharts.com>

MATERNAL & CHILD HEALTH

Measure	2014		2013		2012		
	Broward	Florida	Broward	Florida	Broward	Florida	
Total Live Birth Rate (per 1,000 population)	12.4	11.2	12.1	11.1	12.1	11.2	
Infant Death Rate (per 1,000 population)	5.0	6.0	5.3	6.1	5.2	6.0	
Birth to Mothers Age 15-19 (per 1000 pop.)	16.7	21.9	18.2	23.8	20.3	27.2	
Repeat Birth to Mothers Age 15-19 (%)	18.1	16.5	16.1	16.4	16.9	16.9	
Low Birth Weight <2,500 grams (%)	9.7	8.7	9.4	8.5	9.2	8.6	
3rd Trimester or No Prenatal Care	7.0	5.3	5.9	4.9	5.5	4.8	
2 Year Old Children Fully Immunized (%)	81.7	85.7	88.1	86.7	84.2	82.9	
Kindergartners Immunized (%)	93.6	93.2	93.6	93.2	91.7	92.1	
Healthy Start Screening (%)	Prenatal	80.9	82.8	80.7	82.6	78.6	81.9
	Infant	97.4	94.9	97.6	94.6	97.7	91.8

Source: Florida Charts, <http://www.floridacharts.com>, Florida Department of Health, State Immunization Surveys: <http://www.floridahealth.gov>

HEALTHCARE UTILIZATION

Broward County Facilities		2015	2014	2013
Licensed Beds		6,006	6,002	6,004
Average Length of Stay (Days)		5.1	5.0	5.0
Occupancy Rate		55.2%	53.1%	52.1%
Observation Cases		103,264	91,947	87,134
Observation Hours		2,930,111	2,773,443	2,459,890
Average Daily Census		3,316.6	3,185.3	3,130.0
Acute Care Occupancy Rate		51.7%	49.5%	49.0%
Long Term Care Occupancy Rate		49.7%	52.0%	52.7%
Adult Psychiatric Occupancy Rate		63.5%	61.9%	62.3%
Nursing Home Utilization		81.9%	87.2%	84.2%
Emergency Department Utilization	# of Visits	1,040,168	1,002,538	960,188
	# of Admits	159,581	155,125	152,091

Source: Broward Regional Health Planning Council, Inc. 2013-2015 Hospital Utilization Reports

“Health Professional Shortage Areas (HPSAs) are designated by HRSA as having shortages of primary medical care, dental or mental health providers and may be geographic (a county or service area), demographic (low income population) or institutional (comprehensive health center, federally qualified health center or other public facility).”

Source: <http://www.hrsa.gov/>

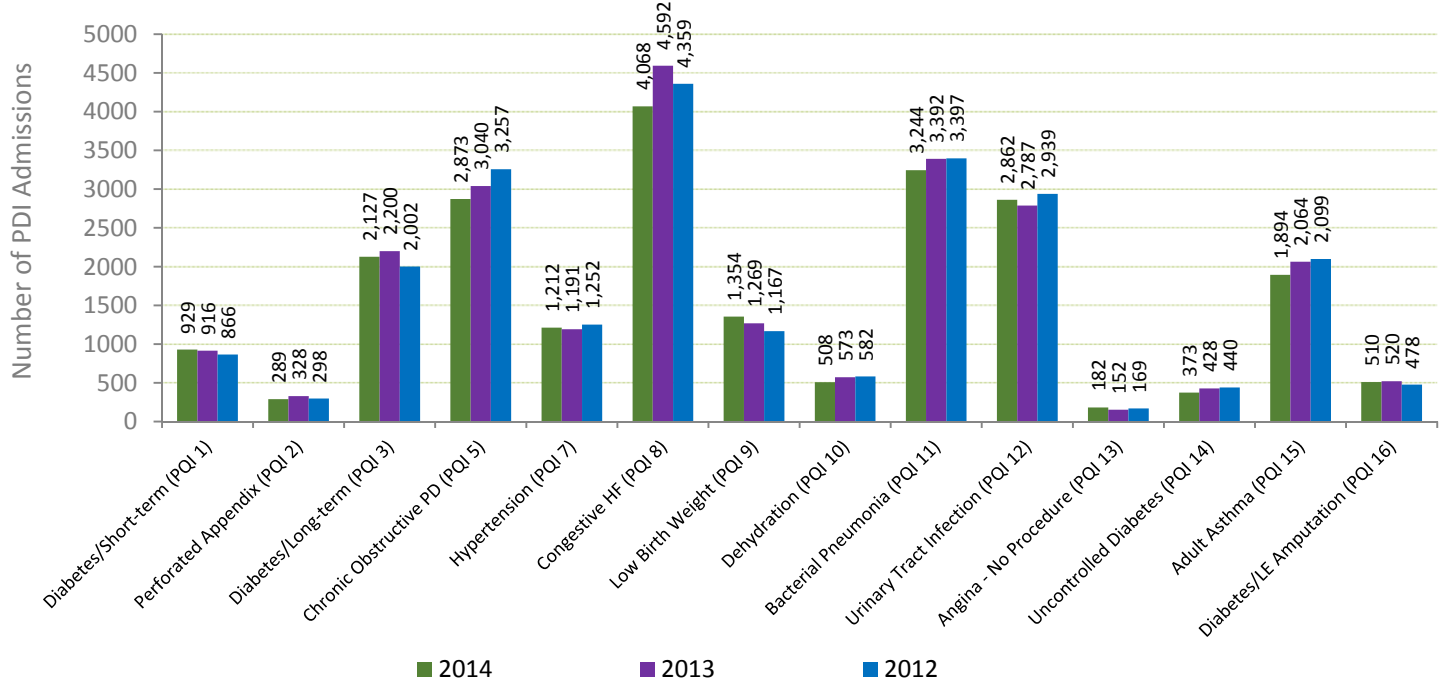
Federal Designations	Broward - June 2015				
	Number	Location	FTE	# Short	Score
Primary Health Professional Shortage Area	7 Low Income	Fort Lauderdale	14	24	13
		Pompano Beach	3	3	15
		Deerfield Beach	1	8	16
		Margate	1	11	15
		Hallandale/Miramar	1	10	17
		Sunrise	1	4	15
		Davie/Hollywood/Dania	7	17	15
	2 Comprehensive Health Centers	Broward Community and Family Health Center	1	0	17
		North Broward Hospital District/Hospital	1	0	18
Native American Tribal Population	Seminole Tribe of Florida-Health Admin.	-	0	14	
Dental Health Professional Shortage Area	3 Low Income	Pompano Beach	1	3	16
		Fort Lauderdale	3	25	15
		Davie	2	17	12
	2 Comprehensive Health Centers	Broward Community and Family Health Center	-	-	10
		North Broward Hospital District/Homeless	-	-	22
	Native American Tribal Population	Seminole Tribe of Florida-Health Admin.	0	-	9
Mental Health Professional Shortage Area	2 Comprehensive Health Centers	Broward Community and Family Health Center	-	-	11
		North Broward Hospital District/Homeless	-	-	14
	Native American Tribal Population	Seminole Tribe of Florida-Health Admin.	0	-	13

Source: U.S Department of Health and Human Services, Health Resources and Services Administration, <http://www.hrsa.gov/>

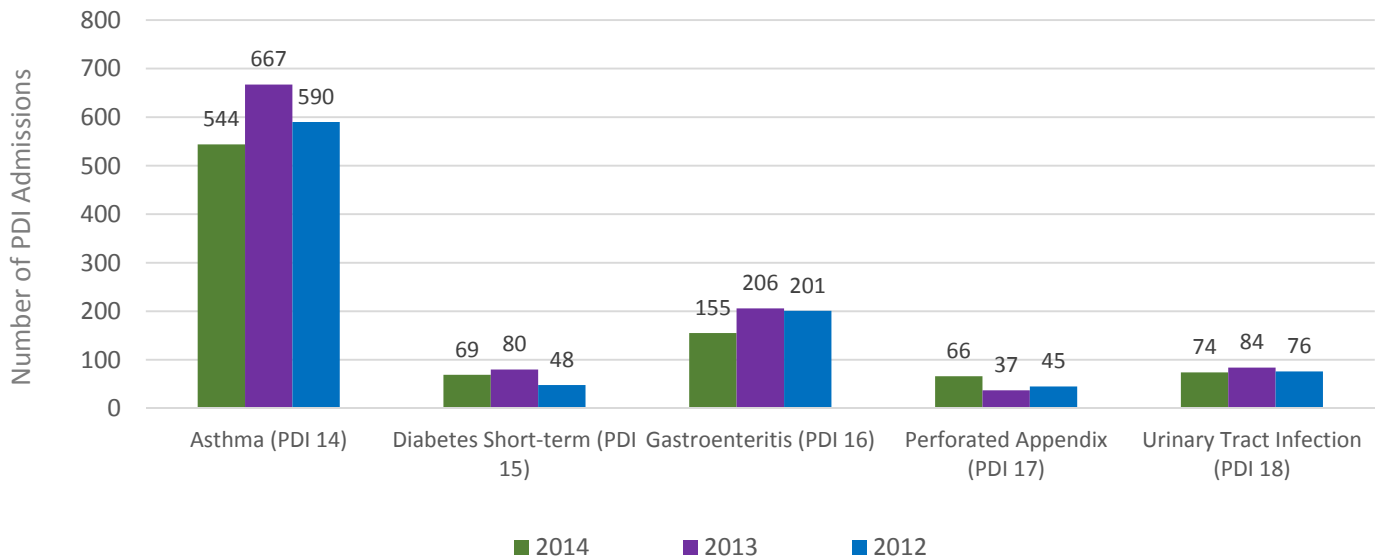
BROWARD PREVENTION QUALITY INDICATORS

The Prevention Quality Indicators are a set of measures that can be used with hospital inpatient discharge data to identify quality of care for "ambulatory care-sensitive conditions." These are conditions for which good outpatient care can potentially prevent the need for hospitalization or for which early intervention can prevent complications or more severe disease. The Pediatric Quality Indicators are the same measures but for patients under the age of 18.

Adults Prevention Quality Indicator



Pediatric Quality Indicators



Source: Broward Regional Health Planning Council, Inc. Health Data Warehouse 2012-2014